



**FOR LEASE**

# S. Eugene Retail/Office Space

**Southtowne Shoppes**  
21 East 28th Avenue  
Eugene, OR 97405

## HIGH TRAFFIC LOCATION ON WILLAMETTE STREET

- Approximately 2,564 square feet of ground floor retail/office space.
- Consists of open area with back storage/inventory area, kitchenette and private restroom
- South Eugene location near Long's Meat Market and Barry's Deli.
- **\$1.20/sf/month, NN.** (NN's are  $\approx$  23¢/sf/mo. for taxes, insurance/garbage)  
Tenant is responsible for utilities and janitorial

**Evans  
Elder  
Brown &  
Seubert**

COMMERCIAL REAL ESTATE

## CONTACT

**Stephanie Seubert**  
stephanie@eebcre.com

**541.345.4860**

Licensed in the State of Oregon.

# Floor Plan

Evans  
Elder  
Brown &  
Seubert

COMMERCIAL REAL ESTATE

## CONTACT

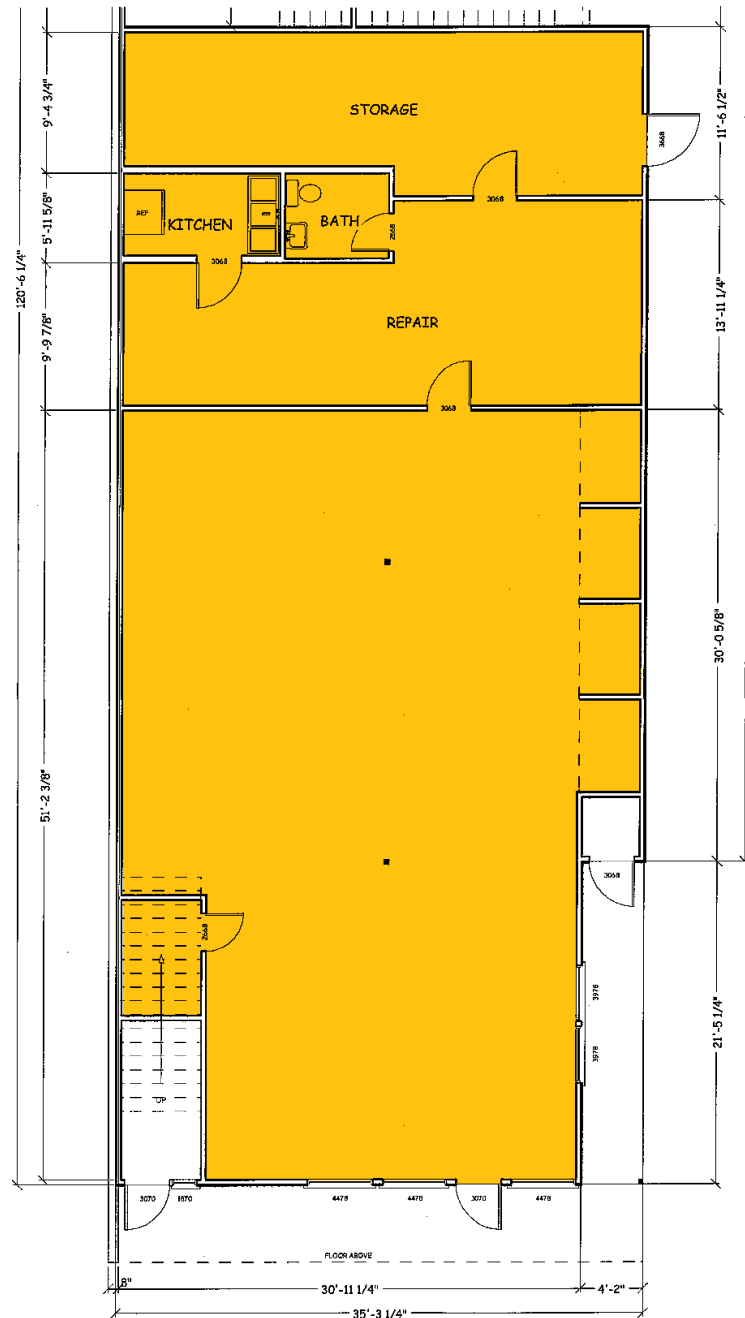
**Stephanie  
Seubert**

stephanie@eebcre.com

**541.345.4860**

101 East Broadway  
Suite #101  
Eugene, OR 97401


Licensed in the  
State of Oregon.



**Southtowne Shoppes**  
21 East 28th Avenue  
Eugene, OR 97405

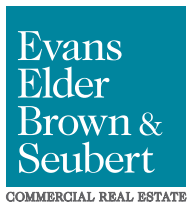
**APPROXIMATELY  
2,564 SQ. FT**

- Open Area
- Back storage or inventory area
- Kitchenette
- Private restroom
- \$1.20/sf/month, NN.  
(NN's are  $\approx$  23¢/sf/mo. for taxes, insurance/garbage)  
Tenant is responsible for utilities and janitorial

 2564 SQ. FT.

# Location

Southtowne Shoppes  
21 East 28th Avenue  
Eugene, OR 97405



## CONTACT

541.345.4860

**Stephanie Seubert**

stephanie@eebcre.com