



FOR LEASE

Medical Office/Retail in Cottage Grove

1260 & 1280 EAST MAIN ST. IN DOWNTOWN COTTAGE GROVE

1280 | Approximately 905 SF

- Open concept retail with one ADA restroom
- \$1.25/SF/Month, NN

1260 | Approximately 1,000 SF

- Medical Office space with:
 - 4 private exam rooms/offices
 - Washer and dryer hookups
 - Lab area
 - 1 ADA restroom
- \$1.45/SF/Month, NN

**Evans
Elder
Brown &
Seubert**

COMMERCIAL REAL ESTATE

CONTACT

Stephanie Seubert

stephanie@eebcre.com

Lilly Stormont

lilly@eebcre.com

Jackson Seubert

jackson@eebcre.com

541.345.4860

Licensed in the State of Oregon.

Floor Plans

1260 & 1280 E Main St. | Cottage Grove OR 97424

Evans
Elder
Brown &
Seubert

COMMERCIAL REAL ESTATE

CONTACT

Stephanie
Seubert

stephanie@eebcre.com

Lilly
Storment

lilly@eebcre.com

Jackson
Seubert

jackson@eebcre.com

541.345.4860

101 East Broadway
Suite #101
Eugene, OR 97401

Licensed in the
State of Oregon.

1280

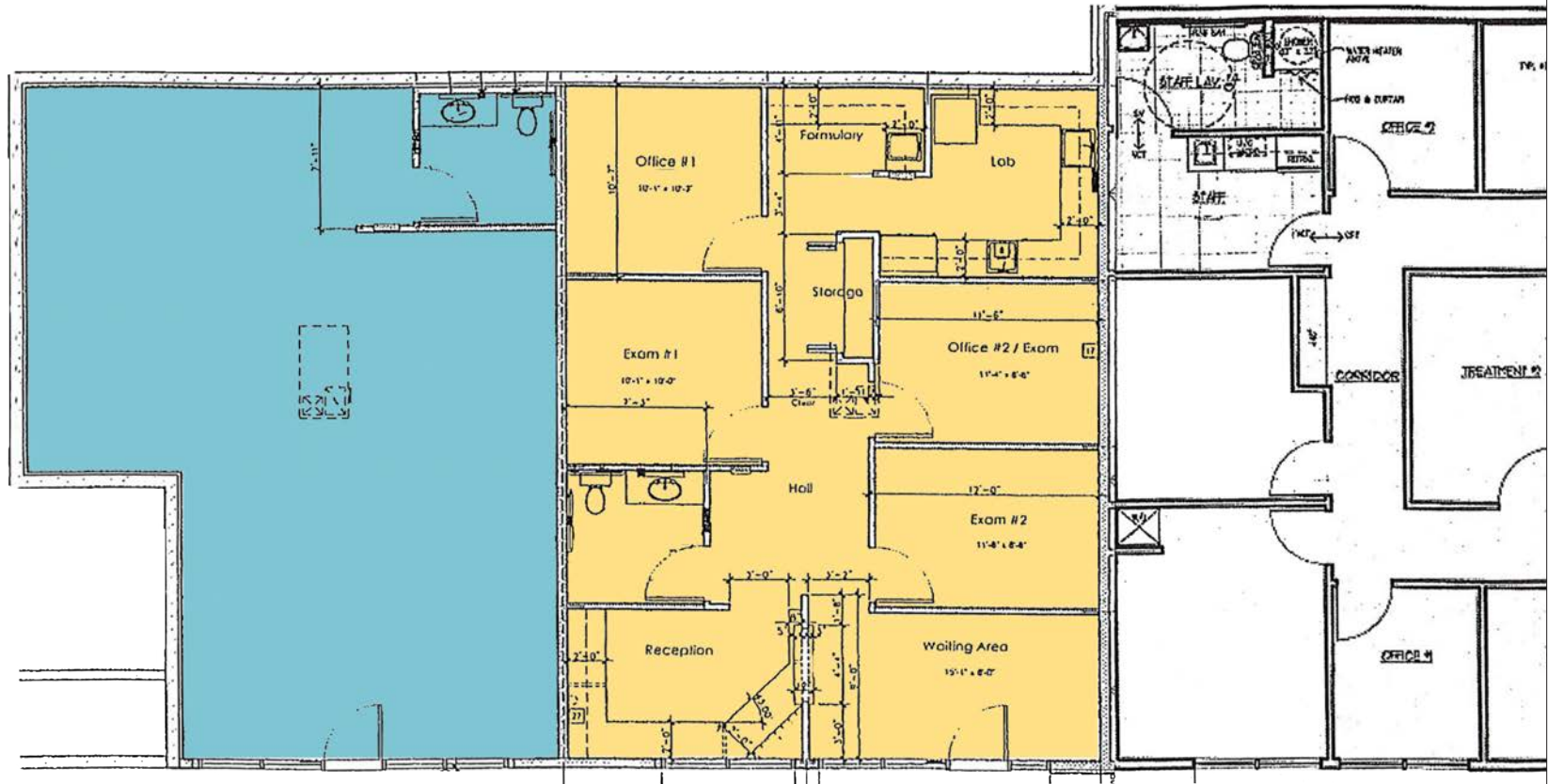
APPROXIMATELY 905 SQUARE FEET

- Open concept retail
- One ADA restroom
- \$1.25/SF/Month NN

1260

APPROXIMATELY 1,000 SQUARE FEET

- Medical Office Space with:
 - Four private exam rooms/offices
 - Lab area
 - Washer and dryer hookups
 - One ADA restroom
- \$1.45/SF/Month, NN



Description

1260 & 1280 E Main St. | Cottage Grove OR 97424

Evans
Elder
Brown &
Seubert

COMMERCIAL REAL ESTATE

CONTACT

**Stephanie
Seubert**

stephanie@eebcre.com

**Lilly
Stormont**

lilly@eebcre.com

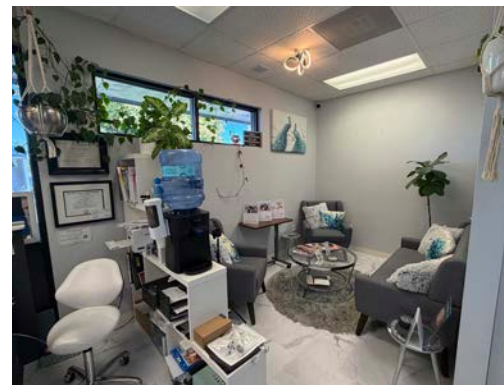
**Jackson
Seubert**

jackson@eebcre.com

541.345.4860

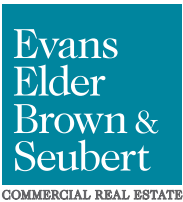
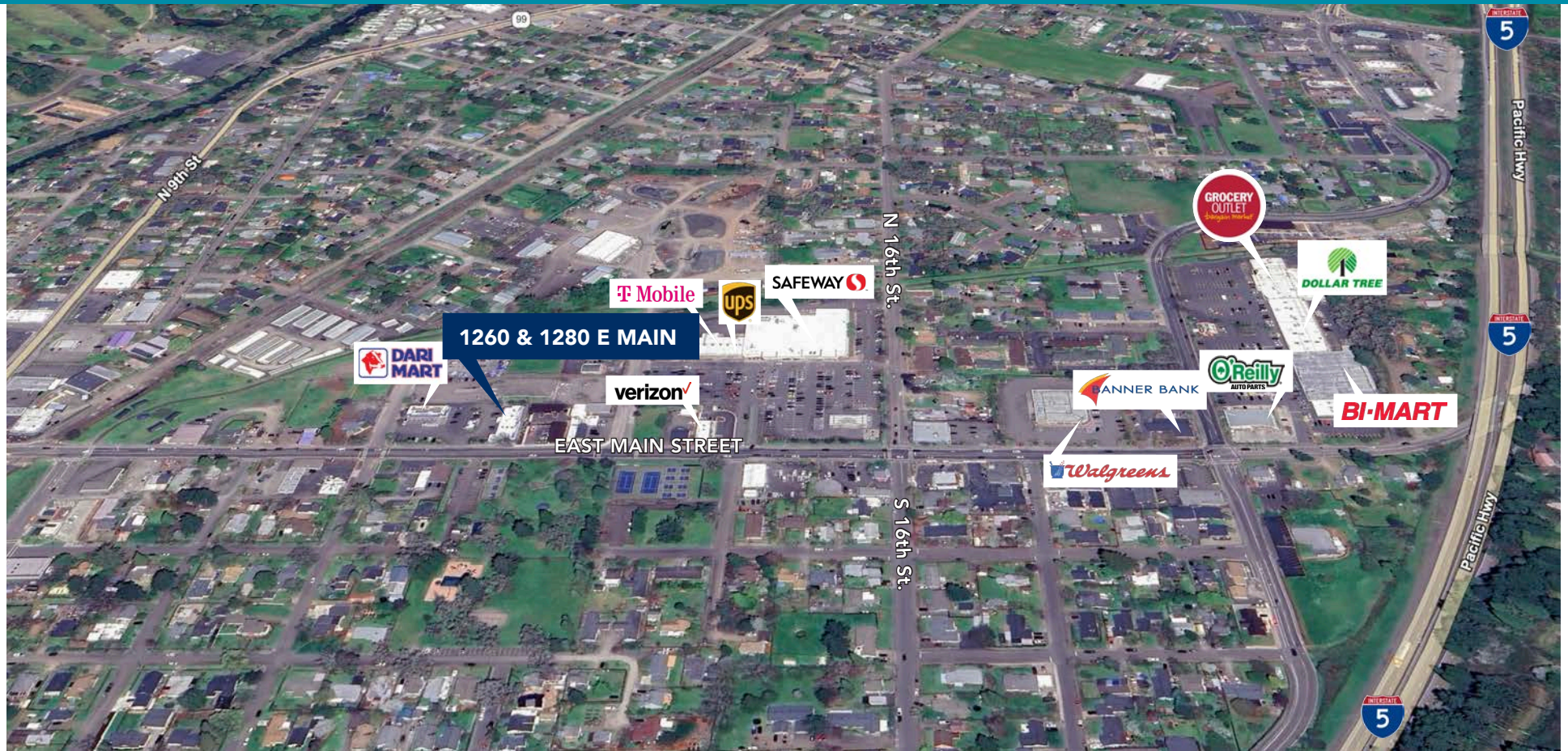
101 East Broadway
Suite #101
Eugene, OR 97401

Licensed in the
State of Oregon.



Location

1260 & 1280 E Main St. | Cottage Grove OR 97424



CONTACT

541.345.4860

Stephanie Seubert
stephanie@eebcre.com

Lilly Storment
lilly@eebcre.com

Jackson Seubert
jackson@eebcre.com