



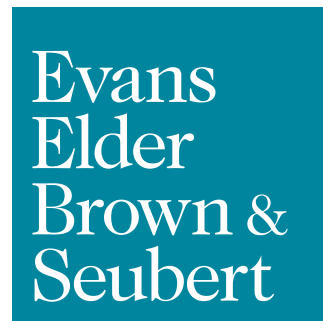
**FOR LEASE**

# Storage Space

**Holly Square**  
2295 Coburg Road  
Eugene OR 97401

## SUITE B5 DETAILS

- Approximately 750 RSF of storage space
- Plentiful parking
- Excellent location at Coburg Road & Beltline Highway Intersection
- \$800 per month, full service plus janitorial



COMMERCIAL REAL ESTATE

## CONTACT

**Stephanie Seubert**  
stephanie@eebcre.com

**Jackson Seubert**  
jackson@eebcre.com

**541.345.4860**

Licensed in the State of Oregon.

# Basement Floor Plan

Holly Square  
2295 Coburg Road | Eugene OR 97401

Evans  
Elder  
Brown &  
Seubert

COMMERCIAL REAL ESTATE

## CONTACT

**Stephanie  
Seubert**

stephanie@eebcre.com

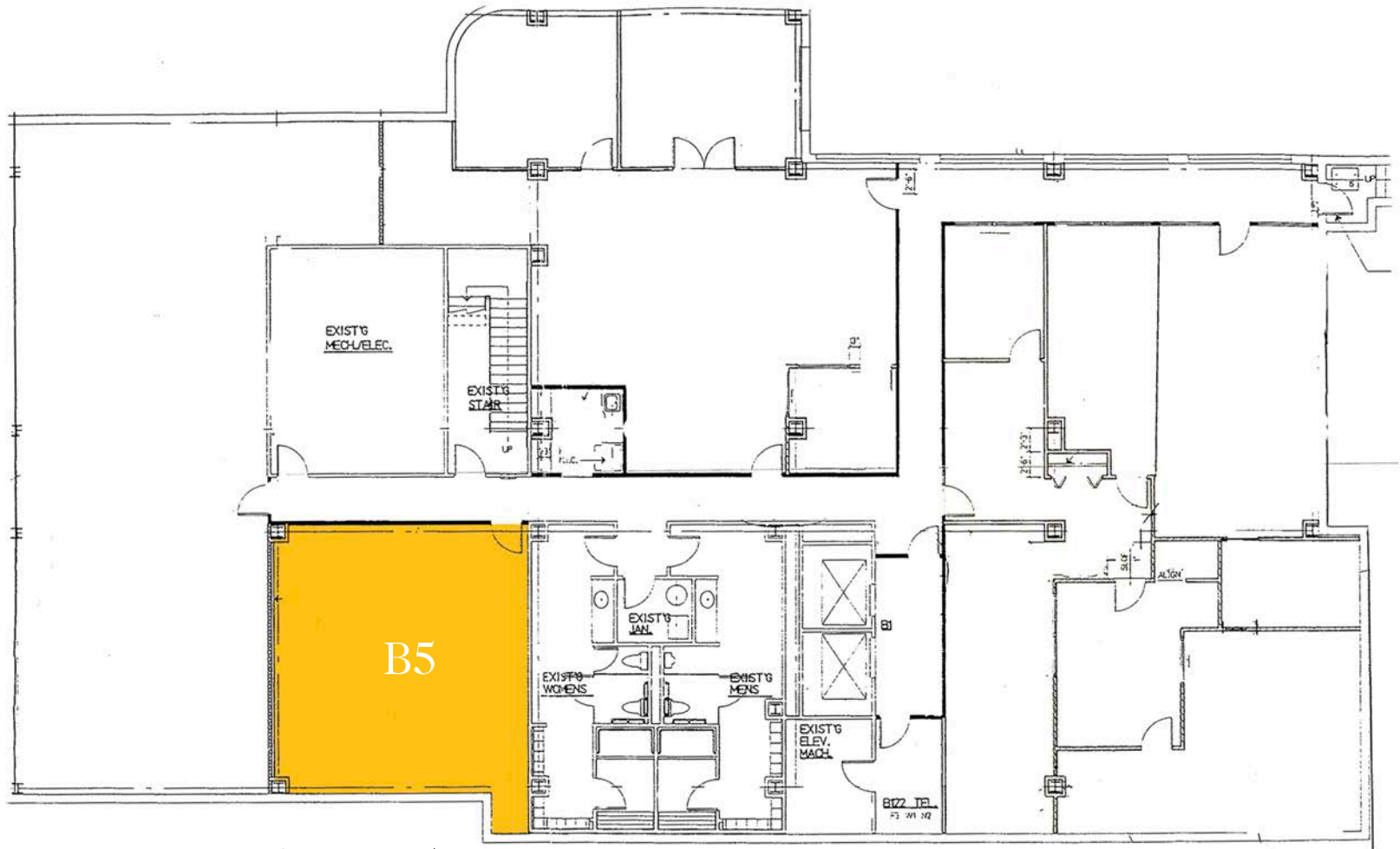
**Jackson  
Seubert**

jackson@eebcre.com

**541.345.4860**

101 East Broadway  
Suite #101  
Eugene, OR 97401

Licensed in the  
State of Oregon.

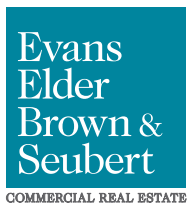


Suite B5

APPROXIMATELY 750 RSF

# Location

Holly Square  
2295 Coburg Road | Eugene OR 97401



## CONTACT

541.345.4860

**Stephanie Seubert**  
stephanie@eebcre.com

**Jackson Seubert**  
jackson@eebcre.com