

FOR LEASE

≈52,875 Sq. Ft. Office Building

959 TERRY STREET | BUILDING 1 | EUGENE OREGON 97402

Evans
Elder
Brown &
Seubert

COMMERCIAL REAL ESTATE

CONTACT

**Stephanie
Seubert**
stephanie@eebcre.com

**Lilly
Stormont**
lilly@eebcre.com

**Jackson
Seubert**
jackson@eebcre.com

541.345.4860

Overview

BUILDING 1
OFFICE | ≈52,875 SF

Features: Mix of private offices, conference rooms, and large open work areas. Also includes 1 dock-high door and 1 roll-up door, a kitchen, breakroom, and multi-stall restrooms, situated in a park-like setting.

- Year Built: 1980
- Zoned E-1 | Campus Employment
- Power: 3-Phase, 480v
- Parking: Approximately 200 Spaces
- Large, Secure Server Room
- Rate: \$11.40/SF/YR, NNN



**Evans
Elder
Brown &
Seubert**

COMMERCIAL REAL ESTATE

CONTACT

**Stephanie
Seubert**

stephanie@eebcre.com

**Lilly
Stormont**

lilly@eebcre.com

**Jackson
Seubert**

jackson@eebcre.com

541.345.4860

101 East Broadway
Suite #101
Eugene, OR 97401

Building 1 Photographs

Flexible open space with multiple work areas and amenities including restrooms, conference rooms, kitchen & server room



**Evans
Elder
Brown &
Seubert**

COMMERCIAL REAL ESTATE

CONTACT

**Stephanie
Seubert**

stephanie@eebcre.com

**Lilly
Stormont**

lilly@eebcre.com

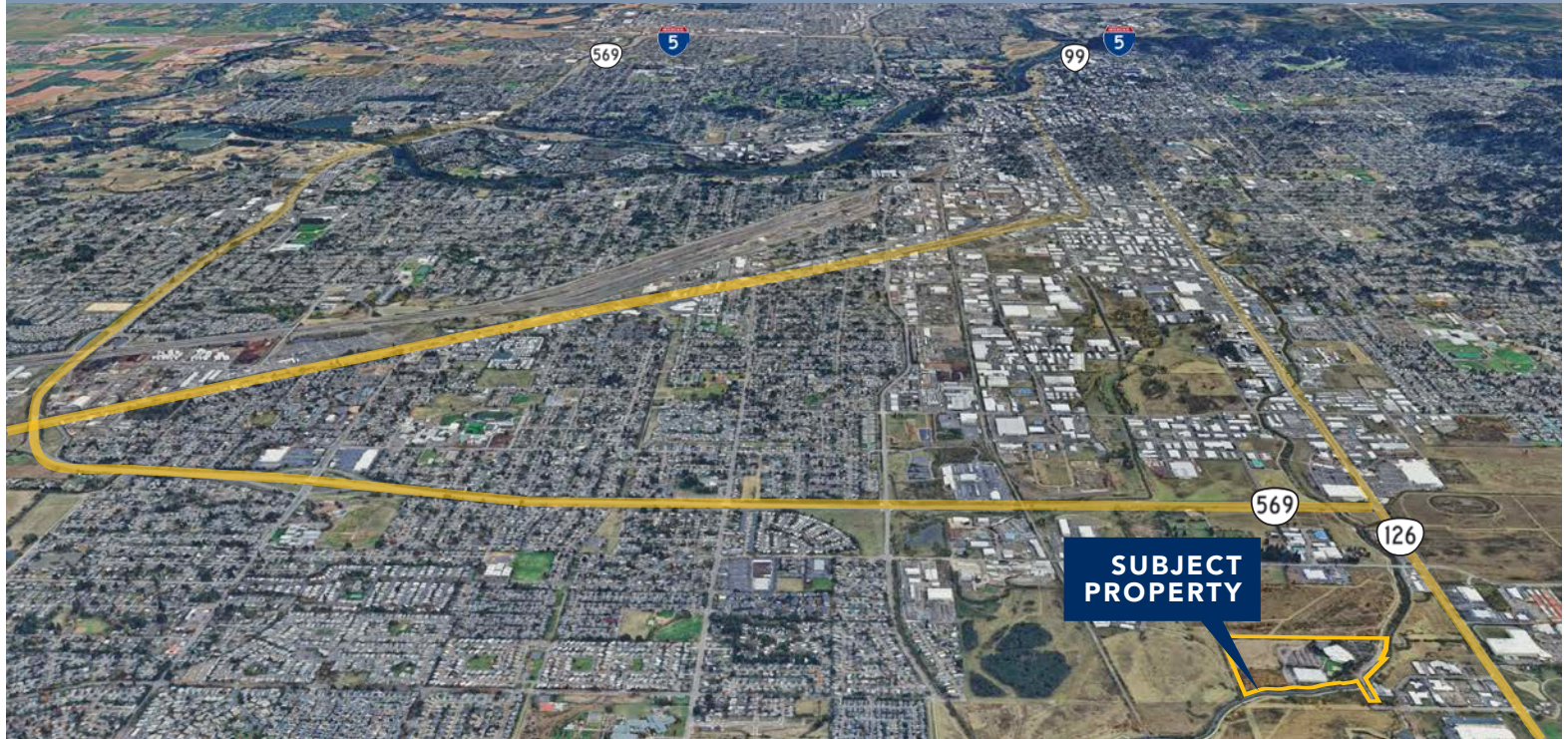
**Jackson
Seubert**

jackson@eebcre.com

541.345.4860

101 East Broadway
Suite #101
Eugene, OR 97401

Licensed in the
State of Oregon.

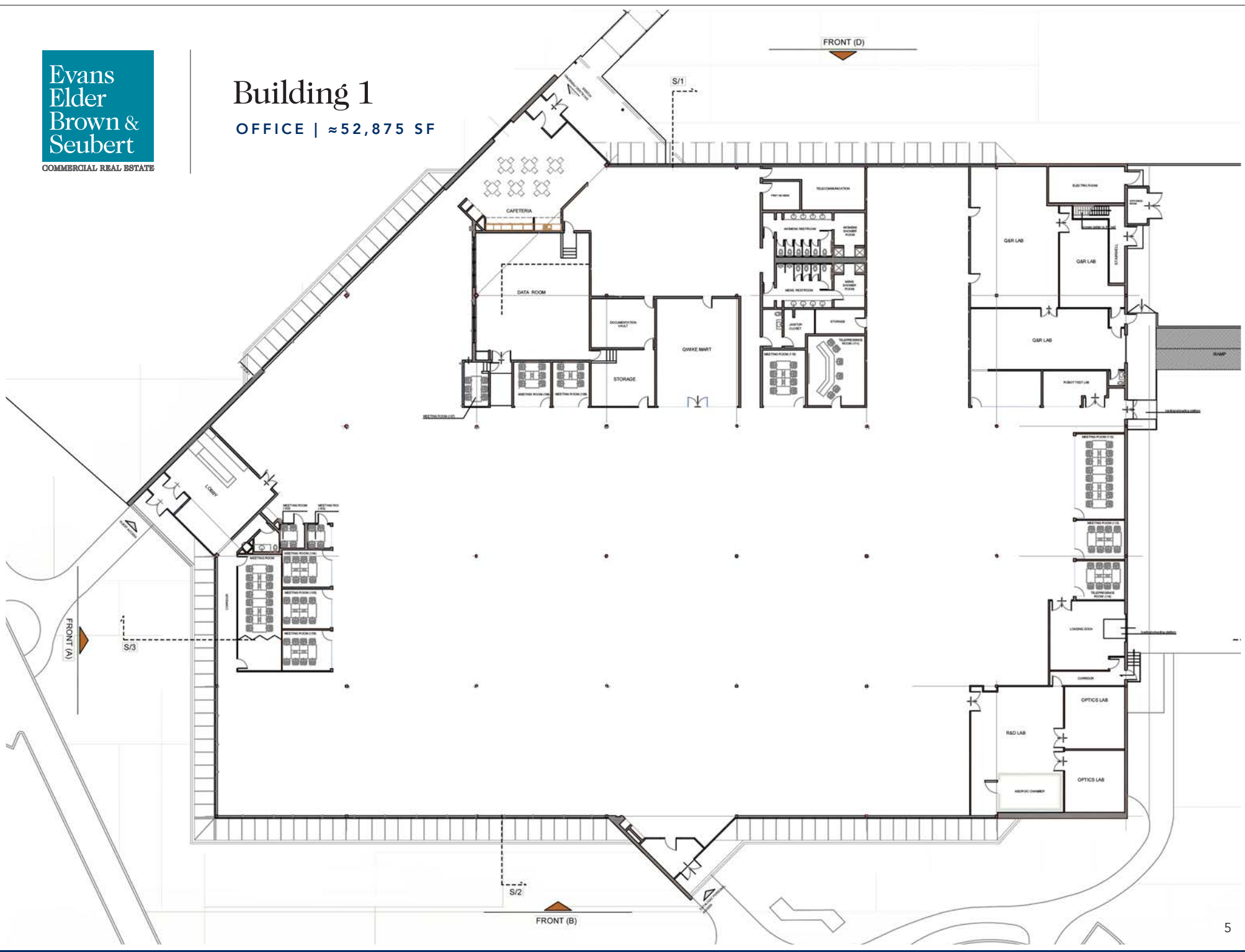


LOCATION

The building is situated in an established industrial zone in West Eugene, which is a hub for manufacturing, logistics, warehousing and technology-related enterprises. It is located near major transportation arterials, including West 11th Avenue, Highway 99, and Randy Papé Beltline Highway, making it easily accessible to Interstate 5. The University of Oregon and Lane Community College are located within the metro area, providing a pipeline of educated workers in engineering, computer science, and other fields relevant to tech and manufacturing.

Building 1

OFFICE | ≈52,875 SF



CONTACT

**Stephanie
Seubert**

stephanie@eebcre.com

**Lilly
Stormont**

lilly@eebcre.com

**Jackson
Seubert**

jackson@eebcre.com

541.345.4860

101 East Broadway
Suite #101
Eugene, OR 97401

Licensed in the
State of Oregon.

Site Plan

959 TERRY STREET | EUGENE OR 97402

