



FOR LEASE

Modern Office Space

Mary Spilde Center
101 West 10th Ave.
Eugene OR 97401

LANE COMMUNITY COLLEGE | MARY SPILDE CENTER

- 2,202 SF - 2,597 SF
- Centrally located on the corner of W 10th Ave. & Olive St. in Downtown Eugene
- Elevator served
- Common Area ADA restrooms on each floor
- LEED Platinum Certified Building
- \$1.25/SF/Month, Modified Gross

**Evans
Elder
Brown &
Seubert**

COMMERCIAL REAL ESTATE

CONTACT

Stephanie Seubert

stephanie@eebcre.com

Lilly Stormont

lilly@eebcre.com

John Brown

john@eebcre.com

541.345.4860

Licensed in the State of Oregon.

Photographs

Lane Community College | Mary Spilde Center
101 West 10th Avenue | Eugene, Oregon 97401

Evans
Elder
Brown &
Seubert

COMMERCIAL REAL ESTATE

CONTACT

**Stephanie
Seubert**

stephanie@eebcre.com

**Lilly
Storment**

lilly@eebcre.com

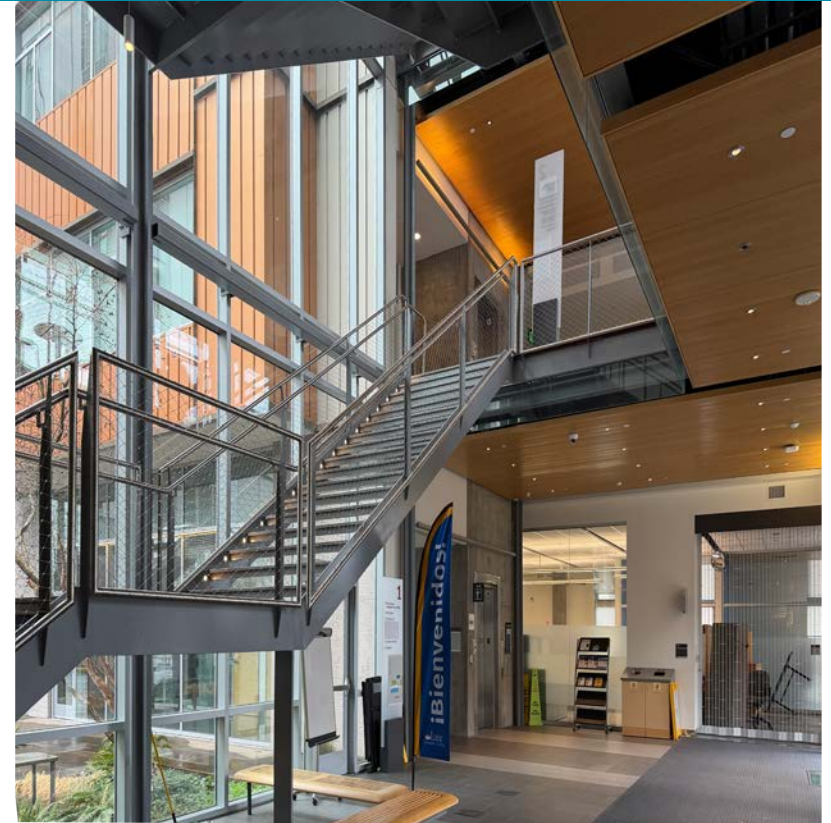
**John
Brown**

john@eebcre.com

541.345.4860

101 East Broadway
Suite #101
Eugene, OR 97401

Licensed in the
State of Oregon.



1st Floor Plan

Lane Community College | Mary Spilde Center
101 West 10th Avenue | Eugene, Oregon 97401

Evans
Elder
Brown &
Seubert

COMMERCIAL REAL ESTATE

CONTACT

**Stephanie
Seubert**

stephanie@eebcre.com

**Lilly
Storment**

lilly@eebcre.com

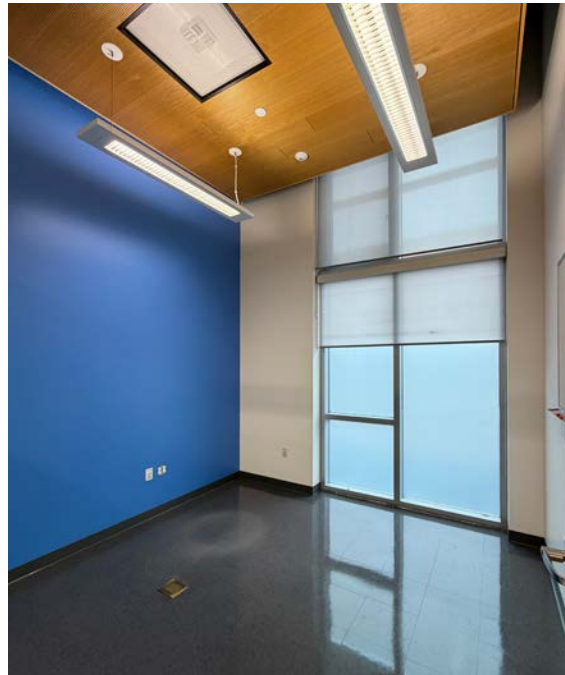
**John
Brown**

john@eebcre.com

541.345.4860

101 East Broadway
Suite #101
Eugene, OR 97401

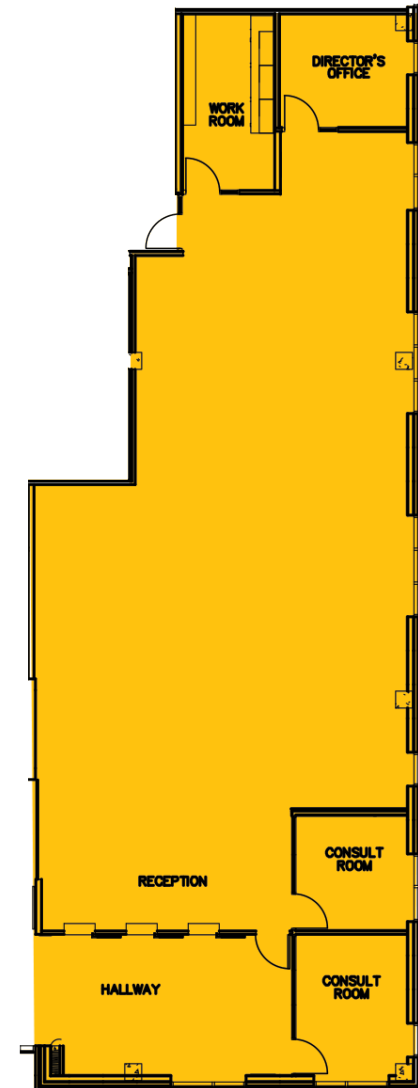
Licensed in the
State of Oregon.



Suite 119

2,597 SQUARE FEET

- Ground Floor
- Entrance off of main building lobby
- Three private offices & open work area
- \$1.25/SF/Month,
Modified Gross



3rd Floor Plan

Lane Community College | Mary Spilde Center
101 West 10th Avenue | Eugene, Oregon 97401

Evans
Elder
Brown &
Seubert

COMMERCIAL REAL ESTATE

CONTACT

**Stephanie
Seubert**

stephanie@eebcre.com

**Lilly
Storment**

lilly@eebcre.com

**John
Brown**

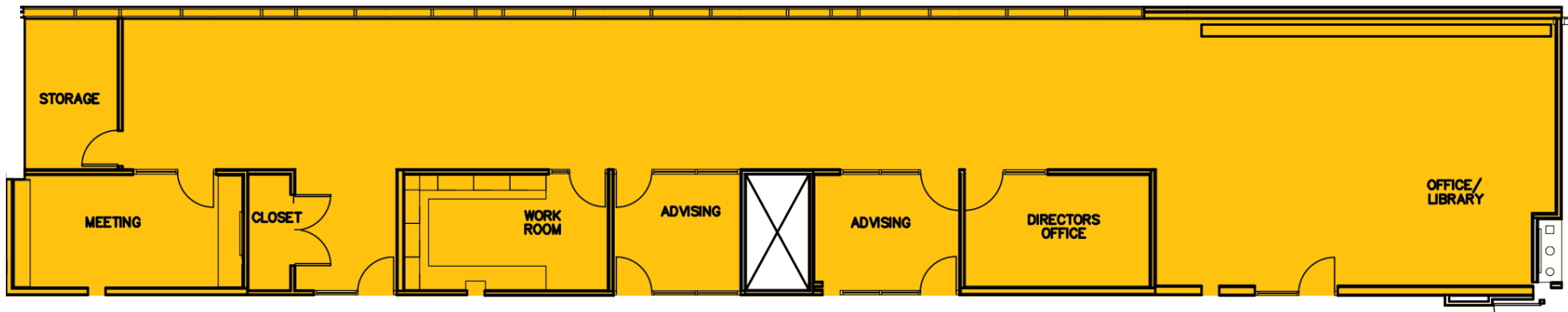
john@eebcre.com



Suite 304

2,762 SQUARE FEET

- Open work area
- 4 private offices
- Conference room
- Kitchen/break room/
work room
- Operable windows
- Abundant natural light
- \$1.25/SF/Month,
Modified Gross



4th Floor Plan

Lane Community College | Mary Spilde Center
101 West 10th Avenue | Eugene, Oregon 97401

Evans
Elder
Brown &
Seubert

COMMERCIAL REAL ESTATE

CONTACT

**Stephanie
Seubert**

stephanie@eebcre.com

**Lilly
Stormont**

lilly@eebcre.com

**John
Brown**

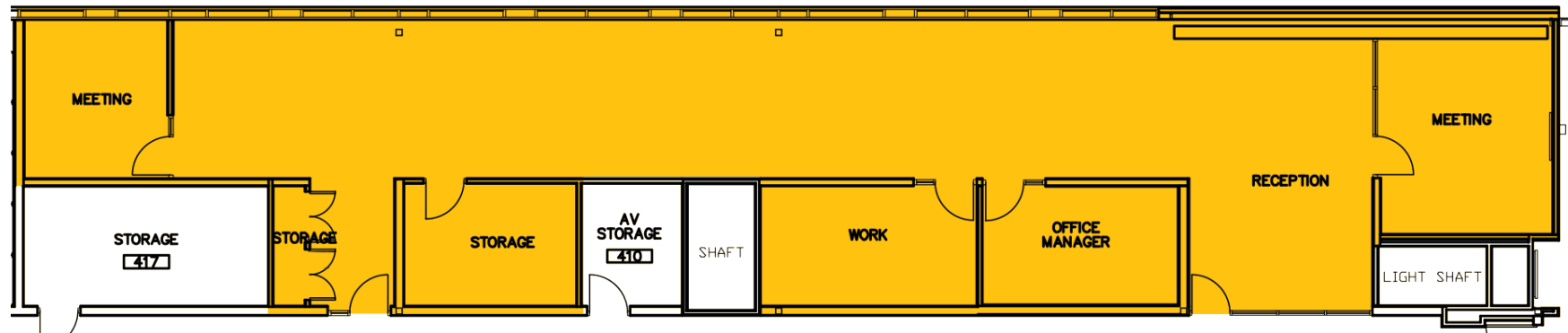
john@eebcre.com



Suite 404

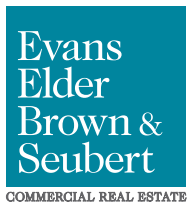
2,202 SQUARE FEET

- Reception
- Kitchen/break room/
work room
- Abundant natural light
- Conference room
- Operable windows
- \$1.25/SF/Month,
Modified Gross
- 3 private offices



Location

Lane Community College | Mary Spilde Center
101 West 10th Avenue | Eugene, Oregon 97401



CONTACT

541.345.4860

Stephanie Seubert
stephanie@eebcre.com

Lilly Storment
lilly@eebcre.com

John Brown
john@eebcre.com