



FOR LEASE

Whiteaker Flex Space

121 Monroe St.
Eugene, OR 97402

DETAILS

- 1,180 Square Feet located on the corner of W 1st Avenue & Monroe Street
- Retail with climate controlled warehouse
- On-site parking
- Building and pylon signage available
- High-traffic retail center anchored by Dari-Mart
- \$1.35/SF/Month, NN (NN's approximately \$0.13/SF/Month)

**Evans
Elder
Brown &
Seubert**

COMMERCIAL REAL ESTATE

CONTACT

Lilly Stormont

lilly@eebcre.com

Stephanie Seubert

stephanie@eebcre.com

John Brown

alan@eebcre.com

541.345.4860

Licensed in the State of Oregon.

Photographs

121 Monroe St. | Eugene OR 97402

Evans
Elder
Brown &
Seubert

COMMERCIAL REAL ESTATE

CONTACT

**Lilly
Storment**

lilly@eebcre.com

**Stephanie
Seubert**

stephanie@eebcre.com

**John
Brown**

john@eebcre.com

541.345.4860

101 East Broadway
Suite #101
Eugene, OR 97401

Licensed in the
State of Oregon.



Floor Plan

121 Monroe St. | Eugene OR 97402

Evans
Elder
Brown &
Seubert

COMMERCIAL REAL ESTATE

CONTACT

**Lilly
Storment**

lilly@eebcre.com

**Stephanie
Seubert**

stephanie@eebcre.com

**John
Brown**

john@eebcre.com

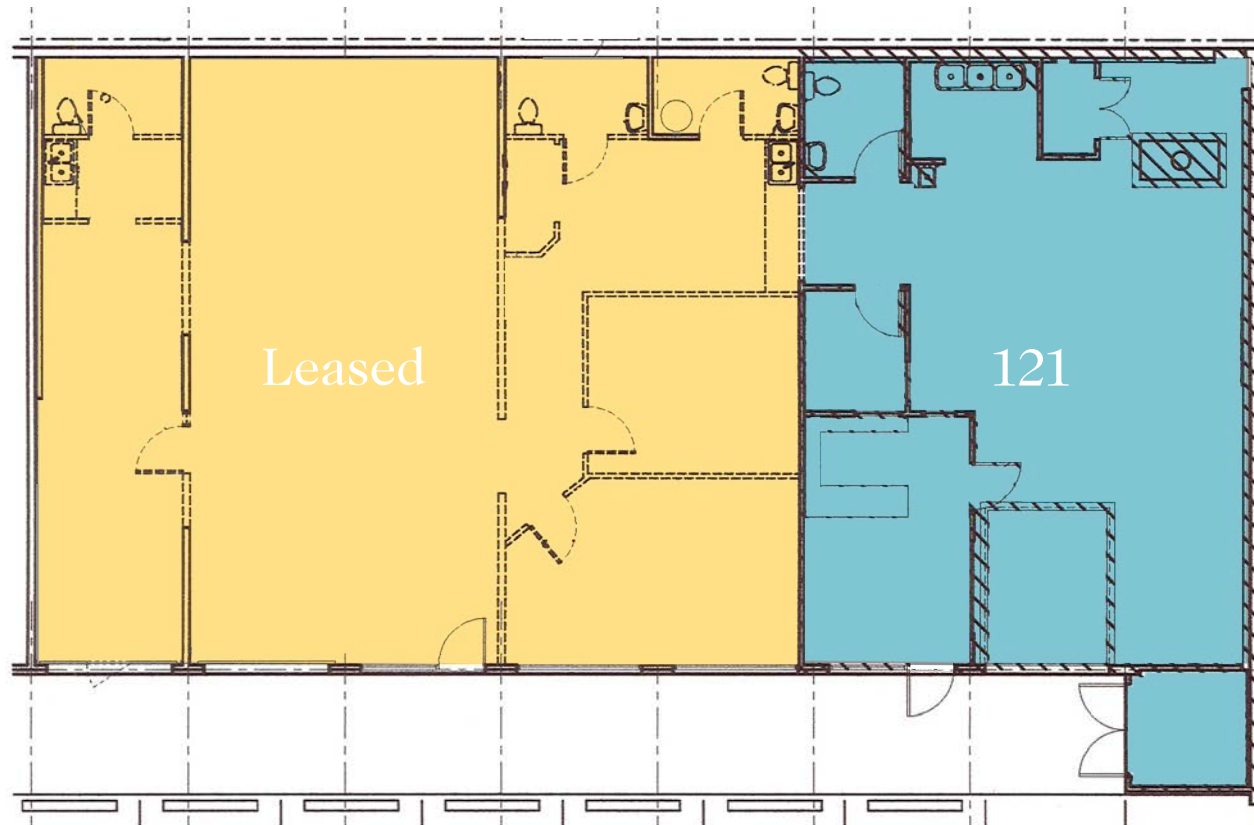
541.345.4860

101 East Broadway
Suite #101
Eugene, OR 97401

Licensed in the
State of Oregon.

Suite 121 APPROXIMATELY 1,180 SF

- Space includes retail/reception area, climate-controlled warehouse, one 8' x 10' roll-up door, floor drains, grease trap, 3-bay sink, 3-phase power, washer dryer hookups and one ADA restroom.
- \$1.35/SF/Month, NN



Location

121 Monroe St. | Eugene OR 97402

Evans
Elder
Brown &
Seubert

COMMERCIAL REAL ESTATE

CONTACT

**Lilly
Storment**

lilly@eebcre.com

**Stephanie
Seubert**

stephanie@eebcre.com

**John
Brown**

john@eebcre.com

541.345.4860

101 East Broadway
Suite #101
Eugene, OR 97401

Licensed in the
State of Oregon.

