



FOR LEASE

Industrial Units

211 Grimes Street
Eugene, OR 97402

UNIT C: APPROXIMATELY 1,600 SF

- Unit includes one 12' x 12' roll up door, a small office space and a private restroom
- Warehouse ceiling height is approximately 16' at the base of the eaves
- The property is zoned I-2 (Light-Medium Industrial)
- 85¢ per square foot per month, modified gross
(Tenant pays their own utilities, janitorial, and \$100.00 per month toward water/sewer in addition to base rent.)

**Evans
Elder
Brown &
Seubert**

COMMERCIAL REAL ESTATE

CONTACT

Stephanie Seubert

stephanie@eebcre.com

Jackson Seubert

jackson@eebcre.com

541.345.4860

Licensed in the State of Oregon.

West Eugene Industrial Units

211 Grimes Street
Eugene OR 97402

Evans
Elder
Brown &
Seubert

COMMERCIAL REAL ESTATE

CONTACT

**Stephanie
Seubert**

stephanie@eebcre.com

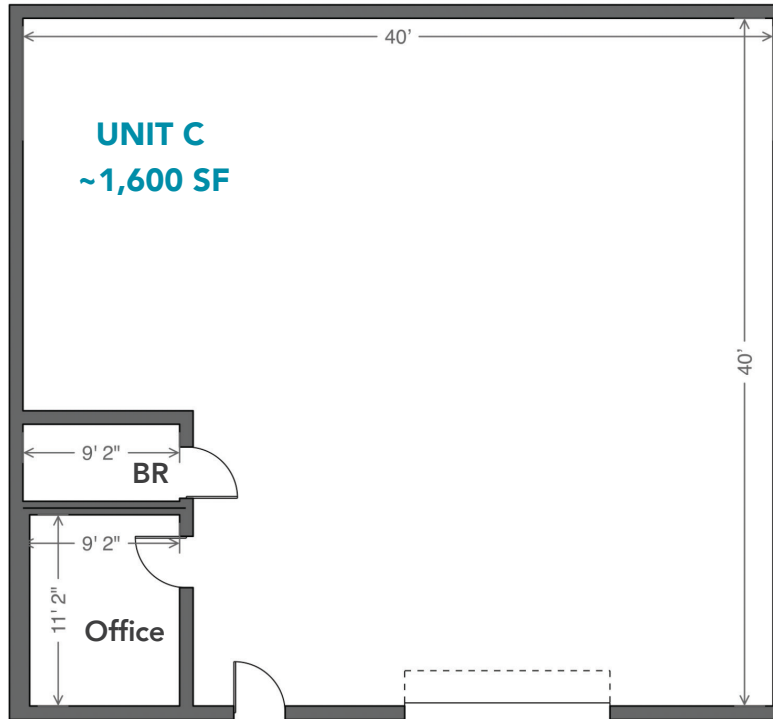
**Jackson
Seubert**

jackson@eebcre.com

541.345.4860

101 East Broadway
Suite #101
Eugene, OR 97401

Licensed in the
State of Oregon.



GRIMES STREET INDUSTRIAL UNITS

- One 12' x 12' roll up door
- Unit includes a small office, private restroom and open warehouse space
- 85¢ per square foot, per month, modified gross
(Tenant pays their own utilities, janitorial, and \$100.00 per month toward water/sewer in addition to base rent.)