



FOR LEASE

# Class A Office Space

2645 Suzanne Way  
Eugene OR 97408

## SECOND FLOOR OFFICE SUITE

- 4,300 square feet
- Second floor with elevator
- On-site parking
- Occupancy October 1, 2025
- \$1.90 PSF, modified gross
- Seven (7) private offices
- Four (4) restrooms
- Large coffee bar
- Lounge
- Large meeting area

**Evans  
Elder  
Brown &  
Seubert**

COMMERCIAL REAL ESTATE

**Jeff Elder**  
jeff@eebcre.com

**Ashley Hope Wells**  
ashley@eebcre.com

**541.345.4860**

Licensed in the State of Oregon.



# Overview

2645 Suzanne Way | Eugene OR 97408

Evans  
Elder  
Brown &  
Seubert

COMMERCIAL REAL ESTATE

## CONTACT

Jeff  
Elder

jeff@eebcre.com

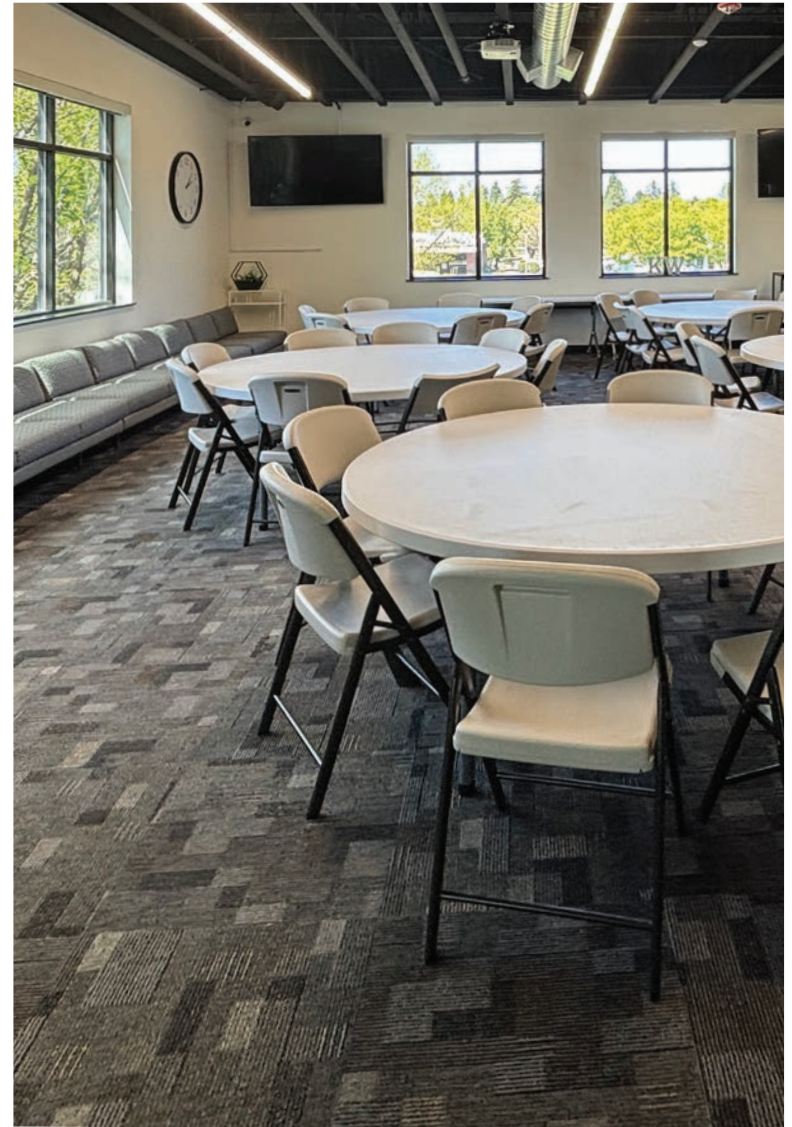
Ashley  
Hope  
Wells

ashley@eebcre.com

541.345.4860

101 East Broadway  
Suite #101  
Eugene, OR 97401

Licensed in the  
State of Oregon.



# 2nd Floor Plan

2645 Suzanne Way | Eugene OR 97408

**Evans  
Elder  
Brown &  
Seubert**

COMMERCIAL REAL ESTATE

## CONTACT

**Jeff  
Elder**

jeff@eebcre.com

**Ashley  
Hope  
Wells**

ashley@eebcre.com

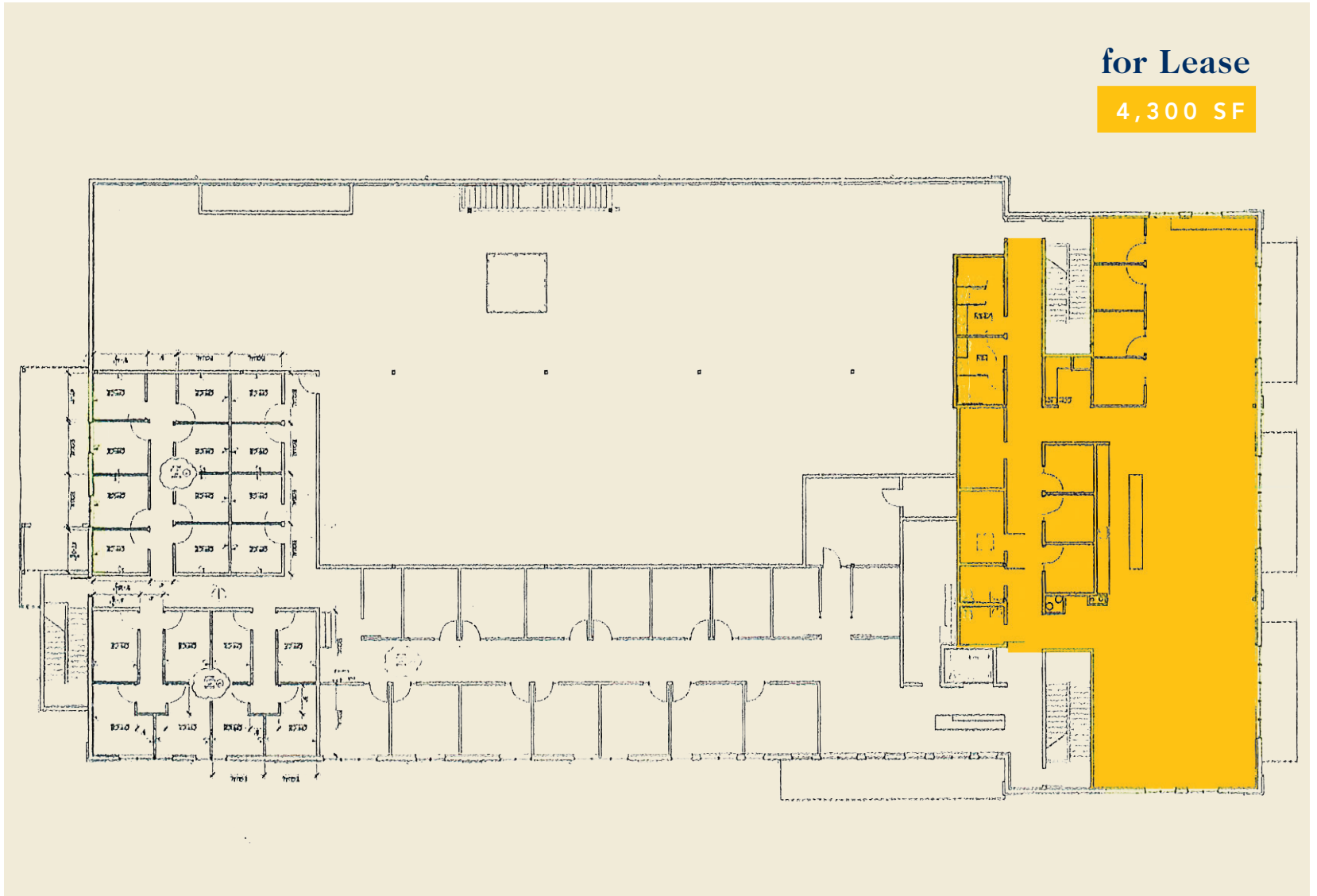
**541.345.4860**

101 East Broadway  
Suite #101  
Eugene, OR 97401

Licensed in the  
State of Oregon.

**for Lease**

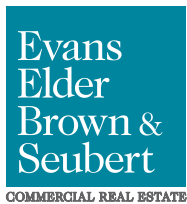
**4,300 SF**





# Location

2645 Suzanne Way | Eugene OR 97408



## CONTACT

541.345.4860

Jeff Elder  
jeff@eebcre.com

Ashley Hope Wells  
ashley@eebcre.com