



FOR LEASE

Quality Class A Office Space

450 Country Club Rd.
Eugene, OR 97401

SUITE 310 DETAILS

- Approximately 1,164 rsf
- Efficient layout includes 3 offices with south facing windows, one large conference room with relites, small storage space and nice reception area.
- \$2.05 per rentable square foot, per month, fully serviced

**Evans
Elder
Brown &
Seubert**

COMMERCIAL REAL ESTATE

CONTACT

Stephanie Seubert
stephanie@eebcre.com

Alan Evans
alan@eebcre.com

541.345.4860

Licensed in the State of Oregon.

Suite 310 Photographs

450 Country Club Road
Eugene, Oregon 97401

Evans
Elder
Brown &
Seubert

COMMERCIAL REAL ESTATE

CONTACT

**Stephanie
Seubert**

stephanie@eebcre.com

**Alan
Evans**

alan@eebcre.com

541.345.4860

101 East Broadway
Suite #101
Eugene, OR 97401

Licensed in the
State of Oregon.



3rd Floor Plan | Suite 310

450 Country Club Road
Eugene, Oregon 97401

Evans
Elder
Brown &
Seubert

COMMERCIAL REAL ESTATE

CONTACT

**Stephanie
Seubert**

stephanie@eebcre.com

**Alan
Evans**

alan@eebcre.com

541.345.4860

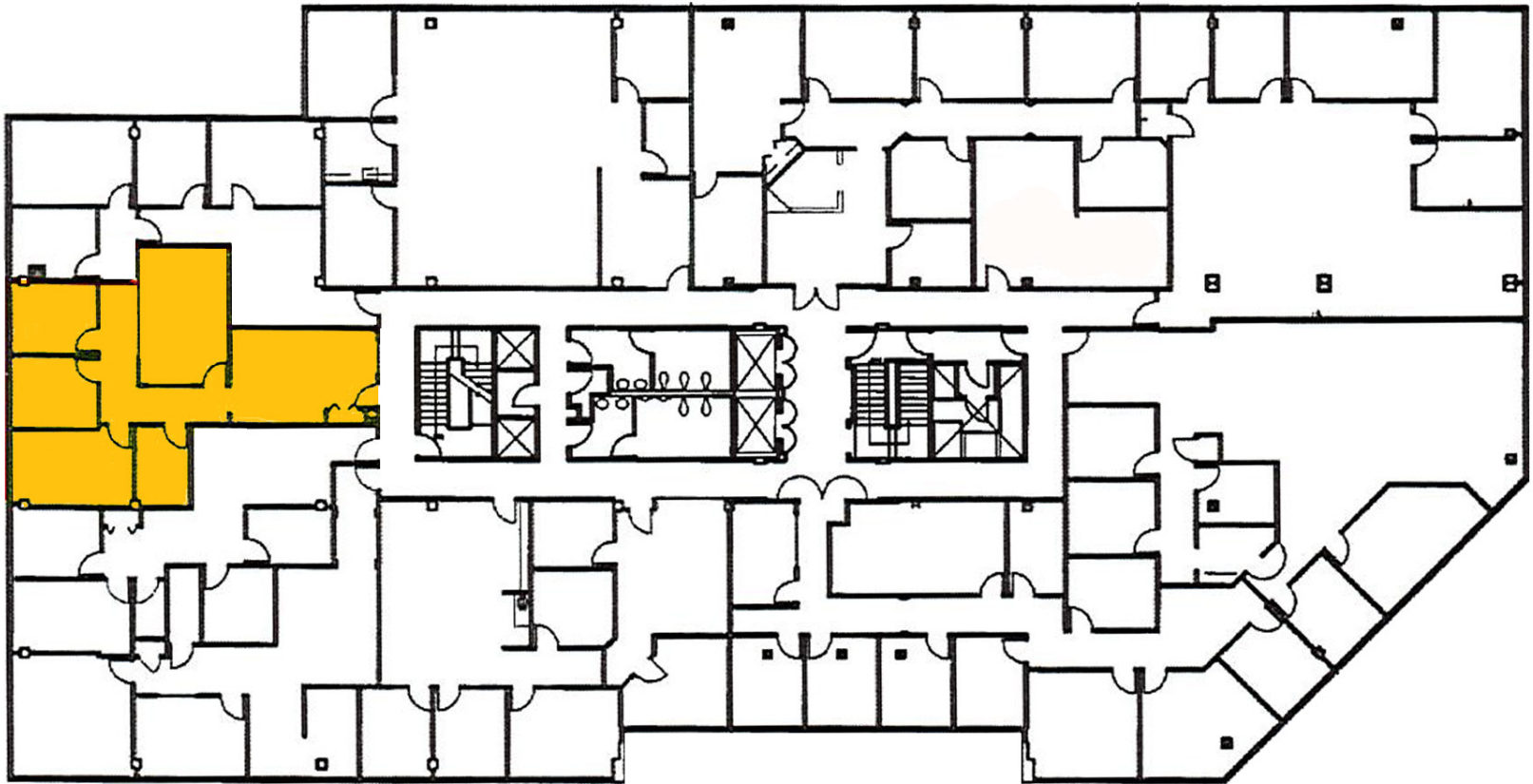
101 East Broadway
Suite #101
Eugene, OR 97401

Licensed in the
State of Oregon.

Suite 310

APPROXIMATELY 1,164 RENTABLE SQUARE FEET

- Three offices with south facing windows
- One large conference room
- Small storage area
- Spacious reception area
- Common area restrooms



Location

450 Country Club Road
Eugene, Oregon 97401

Evans
Elder
Brown &
Seubert

COMMERCIAL REAL ESTATE

CONTACT

**Stephanie
Seubert**

stephanie@eebcre.com

**Alan
Evans**

alan@eebcre.com

541.345.4860

101 East Broadway
Suite #101
Eugene, OR 97401

Licensed in the
State of Oregon.

