



FOR LEASE

High Traffic Retail Building

1600 East Main Street
Cottage Grove OR

DETAILS

- Approximately 5,040 square feet of ground floor retail
- Highly visible location on the corner of 16th and Main Street with excellent signage on three sides of the building
- 21 on-site parking spaces
- \$1.10/SF/Month NNN

**Evans
Elder
Brown &
Seubert**

COMMERCIAL REAL ESTATE

CONTACT

Stephanie Seubert
stephanie@eebcre.com

Lilly Storment
lilly@eebcre.com

541.345.4860

Licensed in the State of Oregon.

Floor Plan

Evans
Elder
Brown &
Seubert

COMMERCIAL REAL ESTATE

CONTACT

**Stephanie
Seubert**

stephanie@eebcre.com

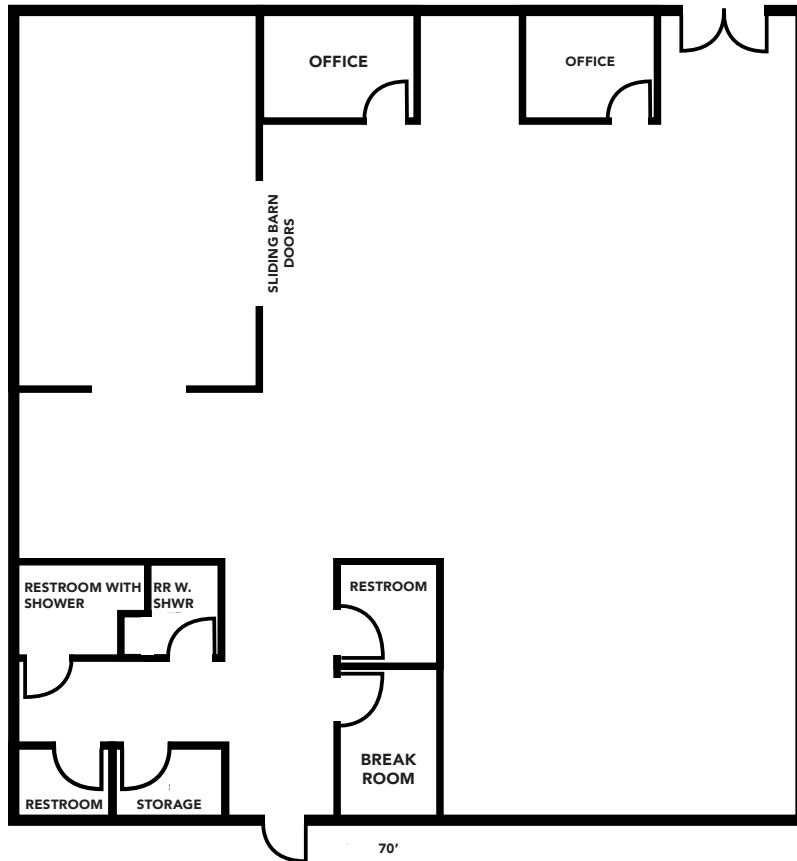
**Lilly
Storment**

lilly@eebcre.com

541.345.4860

101 East Broadway
Suite #101
Eugene, OR 97401

Licensed in the
State of Oregon.



APPROXIMATELY 5,040 SQUARE FEET

- Open floor plan
- Large windows throughout
- High ceilings
- Two private offices
- Large training/conference room
- Four ADA restrooms, two of which also have showers



Photographs

1600 East Main Street
Cottage Grove OR 97424

Evans
Elder
Brown &
Seubert

COMMERCIAL REAL ESTATE

CONTACT

**Stephanie
Seubert**

stephanie@eebcre.com

**Lilly
Stormont**

lilly@eebcre.com

541.345.4860

101 East Broadway
Suite #101
Eugene, OR 97401

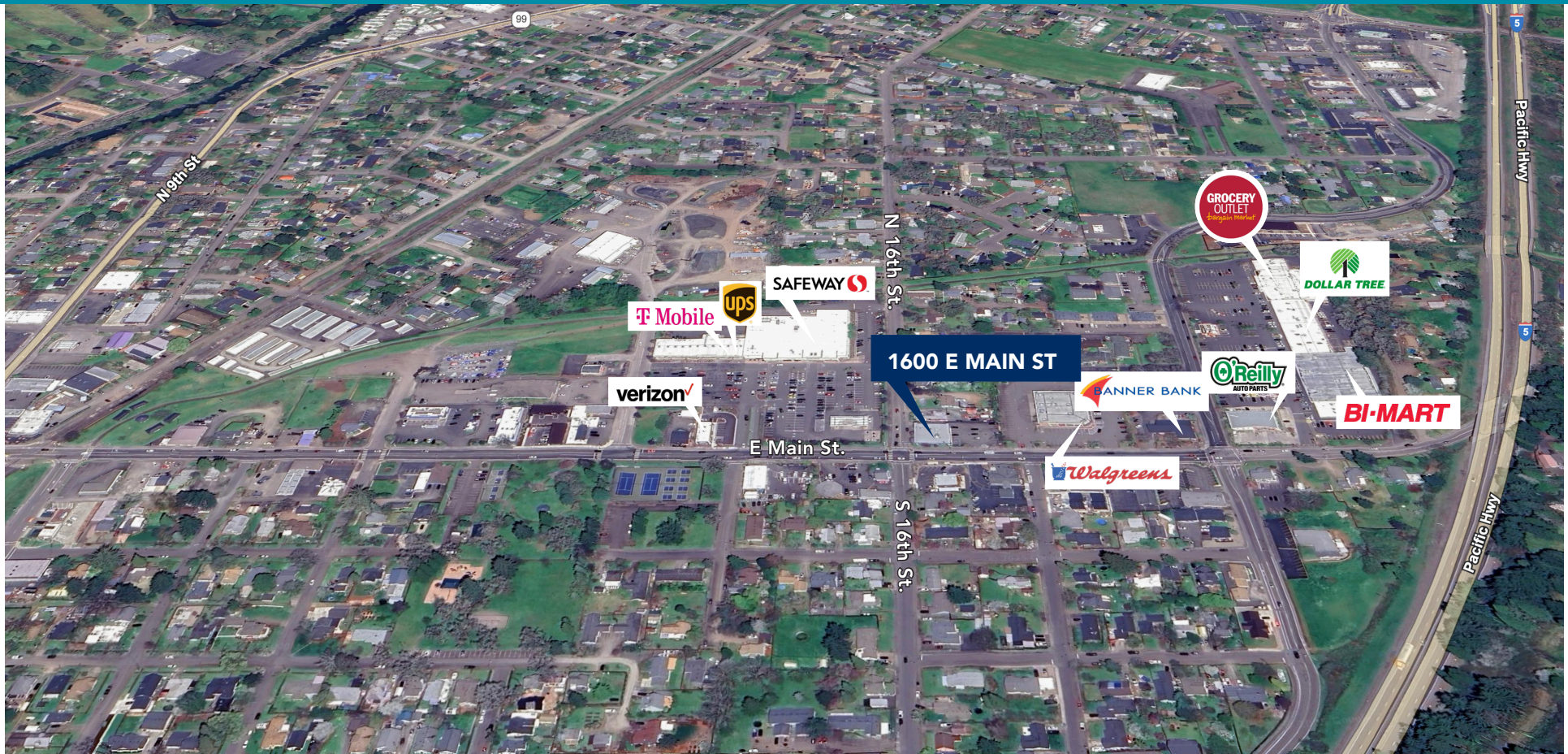
Licensed in the
State of Oregon.



The information in this package was gathered from sources deemed reliable, however Evans Elder Brown & Seubert makes no representation or warranty of the accuracy of the information. Any buyer or tenant considering a purchase or lease of this property should confirm any and all information relied upon in making the decision to purchase or lease prior to finalizing the transaction and bears the risk of all inaccuracies.

Location

1600 East Main Street
Cottage Grove OR 97424



CONTACT

541.345.4860

Stephanie Seubert
stephanie@eebcre.com

Lilly Storment
lilly@eebcre.com