



**FOR LEASE | REDUCED RATE**

# Gateway Area Office Space

1090 Gateway Loop  
Springfield OR 97477

## SECOND FLOOR OFFICE SPACE

- Approximately 3,678 rentable square feet
- Elevatored, ADA Accessible Building
- Excellent on-site parking
- ~~\$1.41 per rsf~~ \$1.28 per rsf per month, plus CAMs  
(CAMs are approximately 38¢ per rsf per month)

**Evans  
Elder  
Brown &  
Seubert**

COMMERCIAL REAL ESTATE

## CONTACT

**Stephanie Seubert**

stephanie@eebcre.com

**Jackson Seubert**

jackson@eebcre.com

**541.345.4860**

Licensed in the State of Oregon.

# Second Floor Plan

1090 Gateway Loop | Springfield OR 97477

Evans  
Elder  
Brown &  
Seubert

COMMERCIAL REAL ESTATE

## CONTACT

**Stephanie  
Seubert**

stephanie@eebcre.com

**Jackson  
Seubert**

jackson@eebcre.com

**541.345.4860**

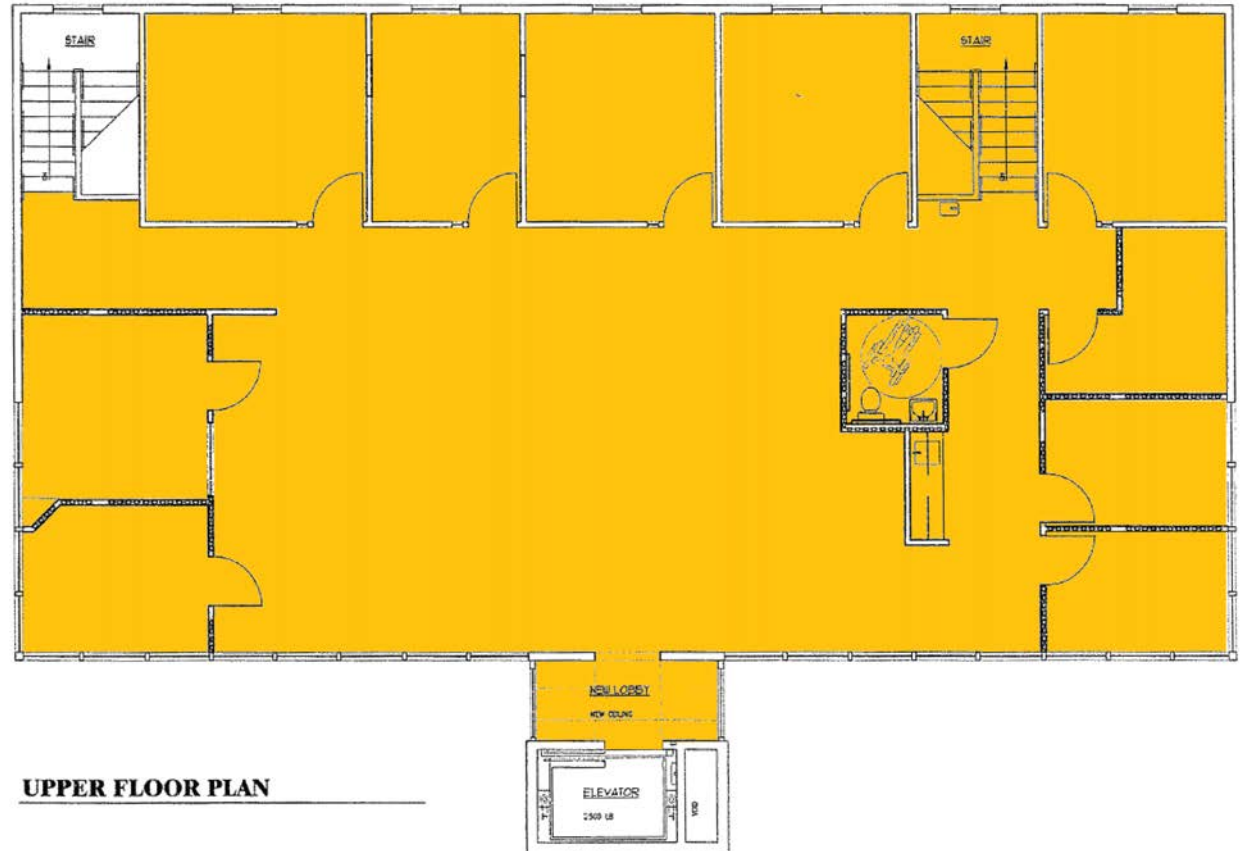
101 East Broadway  
Suite #101  
Eugene, OR 97401

Licensed in the  
State of Oregon.

## Office Suite

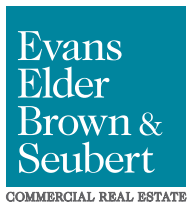
**3,678 RENTABLE SF**

- Elevator access to Second Floor
- Nine (9) private offices
- Open work area
- Server/storage room
- Kitchenette area
- One (1) private ADA restroom with access to common area restrooms on the ground floor
- Abundant natural light
- Updated finishes
- Shared on-site parking
- \$1.28 per rsf per month plus CAMs. (CAMs are approximately 38¢ per rsf per month)



# Location

1090 Gateway Loop | Springfield OR 97477



## CONTACT

541.345.4860

**Stephanie Seubert**  
stephanie@eebcre.com

**Jackson Seubert**  
jackson@eebcre.com