



FOR LEASE

Gateway Area Office Space

1090 Gateway Loop
Springfield OR 97477

SECOND FLOOR OFFICE SPACE

- Approximately 3,678 square feet
- Elevatored, ADA Accessible Building
- Excellent on-site parking
- \$1.41 per SF per Month, plus CAMs (CAMs are approx. \$0.38/SF/Mo.)

**Evans
Elder
Brown &
Seubert**

COMMERCIAL REAL ESTATE

CONTACT

Stephanie Seubert

stephanie@eebcre.com

Jackson Seubert

jackson@eebcre.com

541.345.4860

Licensed in the State of Oregon.

Second Floor Plan

1090 Gateway Loop | Springfield OR 97477

Evans
Elder
Brown &
Seubert

COMMERCIAL REAL ESTATE

CONTACT

**Stephanie
Seubert**

stephanie@eebcre.com

**Jackson
Seubert**

jackson@eebcre.com

541.345.4860

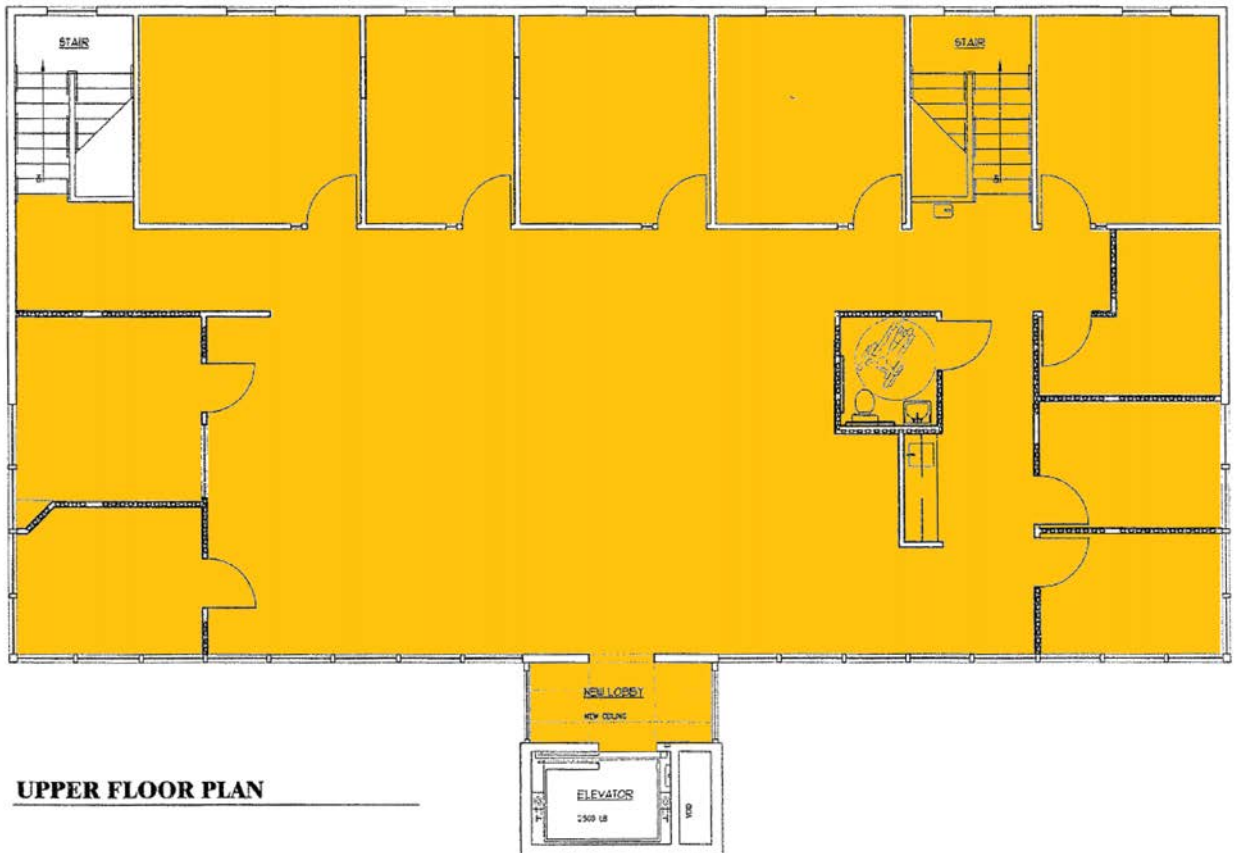
101 East Broadway
Suite #101
Eugene, OR 97401

Licensed in the
State of Oregon.

Office Suite

3,678 SQUARE FEET

- Elevator access to Second Floor
- Nine (9) private offices
- Open work area
- Server/storage room
- Kitchenette area
- One (1) private ADA restroom with access to common area restrooms on the ground floor
- Abundant natural light
- Updated finishes
- Shared on-site parking
- \$1.41 per square foot, per month plus CAMs of approximately 38¢ per square foot, per month



Photographs

1090 Gateway Loop | Springfield OR 97477

**Evans
Elder
Brown &
Seubert**

COMMERCIAL REAL ESTATE

CONTACT

**Stephanie
Seubert**

stephanie@eebcre.com

**Jackson
Seubert**

jackson@eebcre.com

541.345.4860

101 East Broadway
Suite #101
Eugene, OR 97401

Licensed in the
State of Oregon.



The information in this package was gathered from sources deemed reliable, however Evans Elder Brown & Seubert makes no representation or warranty of the accuracy of the information. Any buyer or tenant considering a purchase or lease of this property should confirm any and all information relied upon in making the decision to purchase or lease prior to finalizing the transaction and bears the risk of all inaccuracies.

Location

1090 Gateway Loop | Springfield OR 97477



CONTACT

541.345.4860

Stephanie Seubert
stephanie@eebcre.com

Jackson Seubert
jackson@eebcre.com