



**FOR LEASE**

# Crescent Village Retail

**Evans  
Elder  
Brown &  
Seubert**

COMMERCIAL REAL ESTATE

## CONTACT

**Stephanie Seubert**  
stephanie@eebcre.com

**Alan Evans**  
alan@eebcre.com

**(541) 345-4860**

Licensed in the State of Oregon.

## PROPERTY DETAILS

- Approximately 1,250 square feet
- Highly-visible, corner location at entrance to Crescent Village
- Move in ready condition with high-quality finishes
- \$27.00 per square foot, NNN

**Crescent Village**  
2734 Shadow View Drive  
Eugene, OR 97408

# Floor Plan

2734 Shadow View Dr.  
Eugene, OR 97408

Evans  
Elder  
Brown &  
Seubert

COMMERCIAL REAL ESTATE

## CONTACT

**Stephanie  
Seubert**

stephanie@eebcre.com

**Alan  
Evans**

alan@eebcre.com

**Jackson  
Seubert**

jackson@eebcre.com

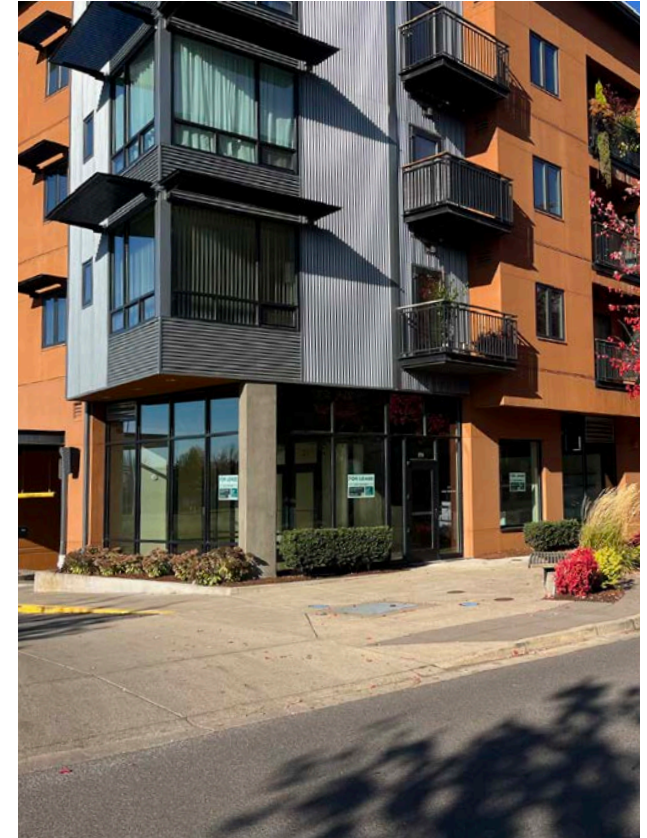
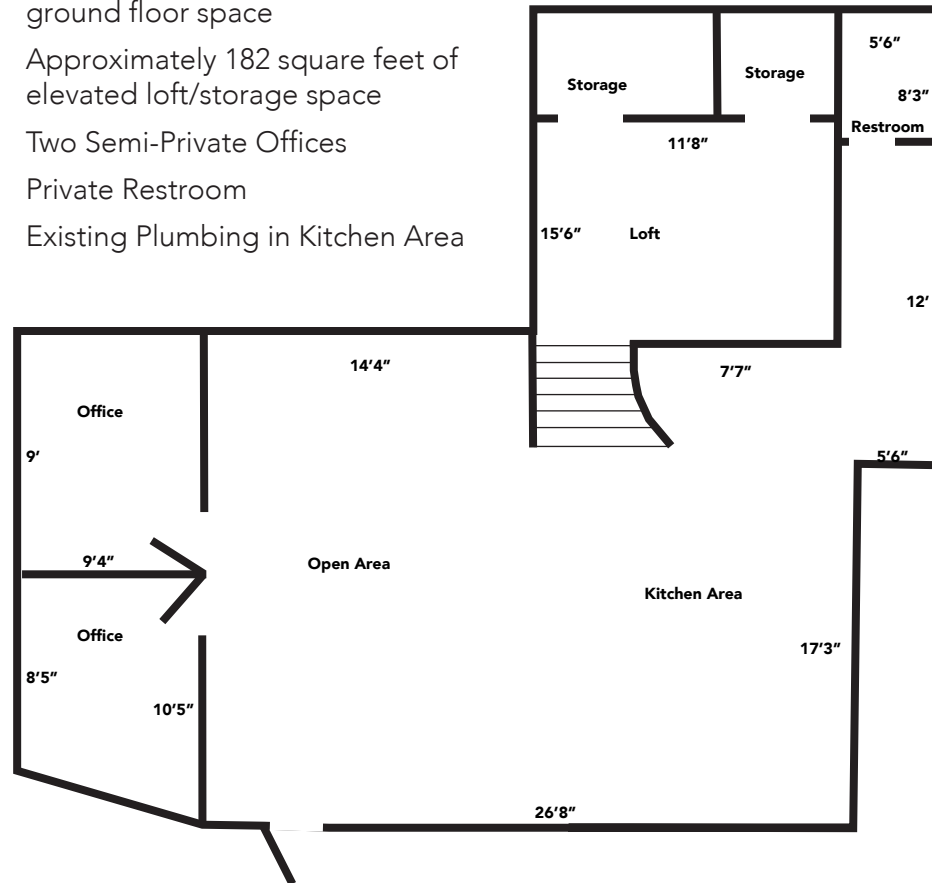
**(541) 345-4860**

101 East Broadway  
Suite #101  
Eugene, OR 97401

Licensed in the  
State of Oregon.

## Details

- Approximately 1,250 square feet of ground floor space
- Approximately 182 square feet of elevated loft/storage space
- Two Semi-Private Offices
- Private Restroom
- Existing Plumbing in Kitchen Area





# Photographs

2734 Shadow View Dr.  
Eugene, OR 97408

Evans  
Elder  
Brown &  
Seubert

COMMERCIAL REAL ESTATE

## CONTACT

**Stephanie  
Seubert**

stephanie@eebcre.com

**Alan  
Evans**

alan@eebcre.com

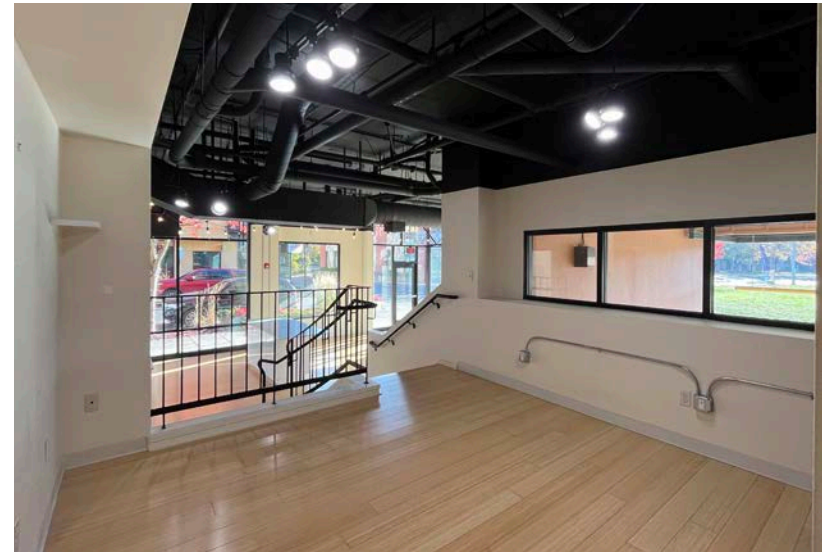
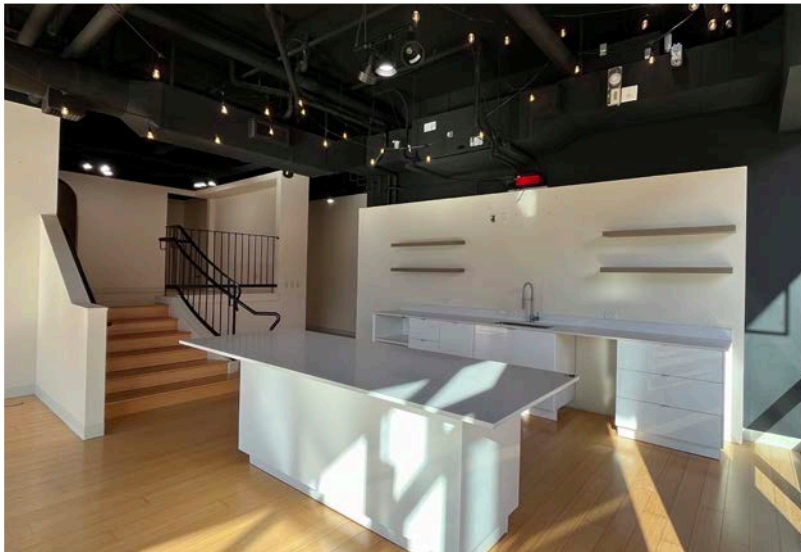
**Jackson  
Seubert**

jackson@eebcre.com

**(541) 345-4860**

101 East Broadway  
Suite #101  
Eugene, OR 97401

Licensed in the  
State of Oregon.



# Site Plan

2734 Shadow View Dr.  
Eugene, OR 97408

Evans  
Elder  
Brown &  
Seubert

COMMERCIAL REAL ESTATE

## CONTACT

**Stephanie  
Seubert**

stephanie@eebcre.com

**Alan  
Evans**

alan@eebcre.com

**Jackson  
Seubert**

jackson@eebcre.com

**(541) 345-4860**

101 East Broadway  
Suite #101  
Eugene, OR 97401

Licensed in the  
State of Oregon.



## CRESCENT VILLAGE - TOWN CENTER ADDRESSES

NOTE: ALL ADDRESSES ARE ON SHADOW VIEW DRIVE,  
EXCEPT FOR SUITE #101 LOCATED AT 2911 TENNYSON



# Location

2734 Shadow View Dr.  
Eugene, OR 97408



## CONTACT

**Stephanie Seubert**  
stephanie@eebcre.com

**(541) 345-4860**

**Alan Evans**  
alan@eebcre.com

**(541) 345-4860**

**Jackson Seubert**  
jackson@eebcre.com

**(541) 345-4860**