



FOR LEASE

Quality Office Space

488 East 11th Avenue
Eugene, Oregon 97401

SUITE 220A DETAILS

- Approximately 4,286 rentable square feet available on the 2nd floor
- Quality office space includes 6 offices, conference room, open work space and large counter with sink
- On-site parking (13 dedicated spaces)
- Conveniently located on EMX line between downtown and the University of Oregon
- \$1.70 per square foot, fully serviced, less janitorial

**Evans
Elder
Brown &
Seubert**

COMMERCIAL REAL ESTATE

CONTACT

Stephanie Seubert
stephanie@eebcre.com

541.345.4860

Licensed in the State of Oregon.

Suite 220A

488 East 11th Avenue
Eugene, Oregon 97401

Evans
Elder
Brown &
Seubert

COMMERCIAL REAL ESTATE

CONTACT

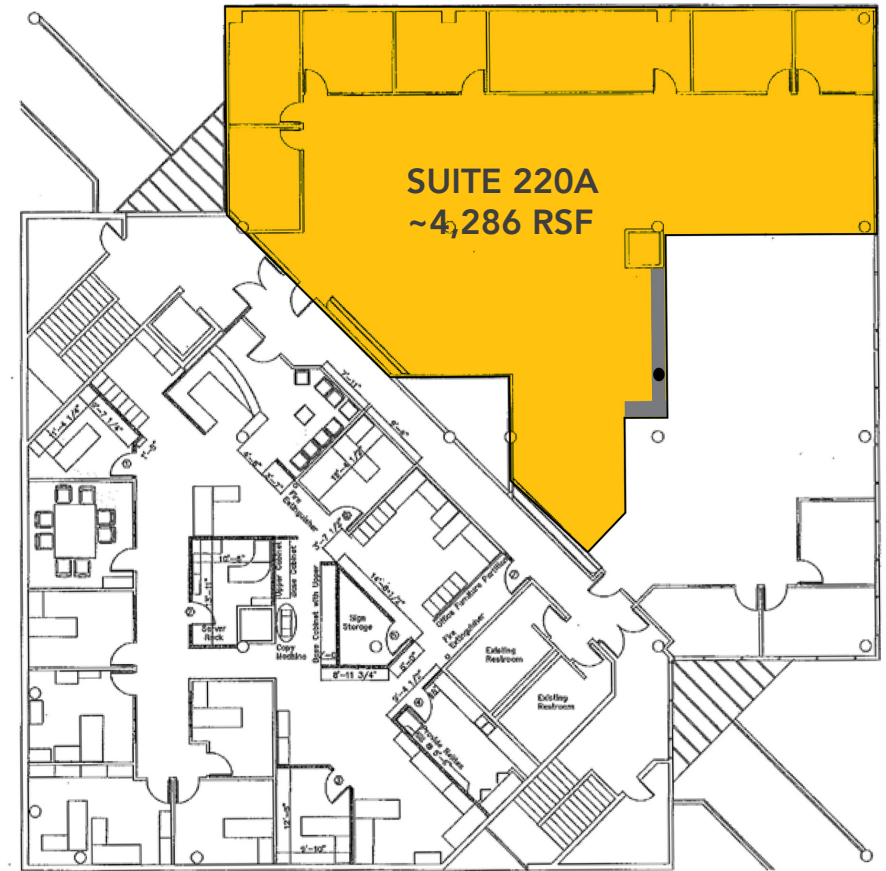
**Stephanie
Seubert**

stephanie@eebcre.com

541.345.4860

101 East Broadway
Suite #101
Eugene, OR 97401

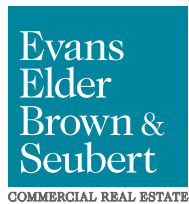
Licensed in the
State of Oregon.



The information in this package was gathered from sources deemed reliable, however Evans Elder Brown & Seubert makes no representation or warranty of the accuracy of the information. Any buyer or tenant considering a purchase or lease of this property should confirm any and all information relied upon in making the decision to purchase or lease prior to finalizing the transaction and bears the risk of all inaccuracies.

Location

488 East 11th Avenue
Eugene, Oregon 97401



CONTACT

Stephanie Seubert
stephanie@eebcre.com

541.345.4860