

**Evans  
Elder  
Brown &  
Seubert**

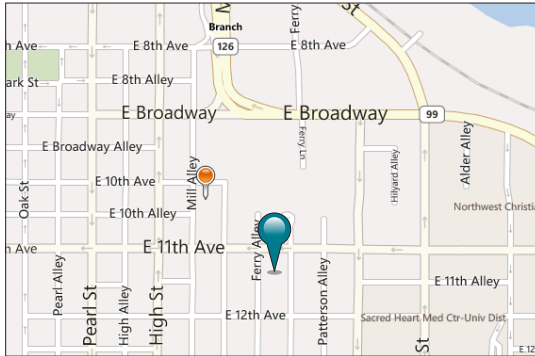
COMMERCIAL REAL ESTATE

101 E. Broadway  
Suite 101  
Eugene, OR 97401  
(541) 345-4860

*eebcre.com*

## FOR LEASE

488 E 11th Avenue  
Eugene OR 97401



### CONTACT

**Stephanie Seubert**  
stephanie@eebcre.com

(541) 345-4860

Licensed in the State of Oregon

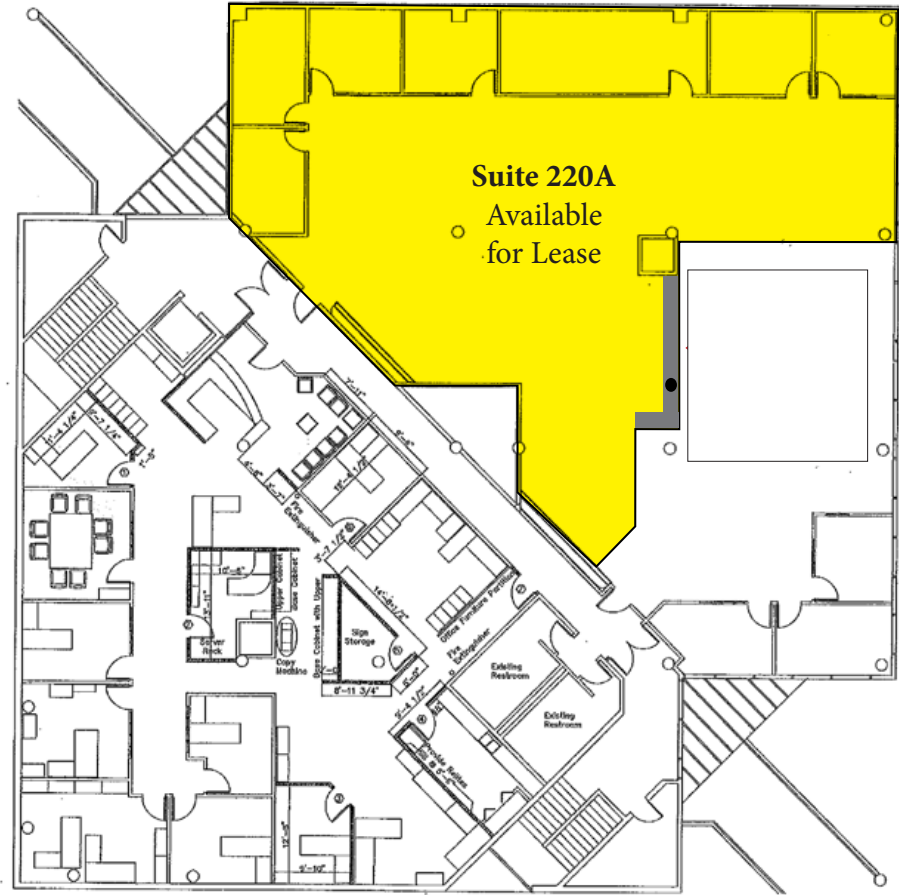


## Quality Office Space

- Approximately 4,286 rentable square feet available on the 2nd floor
- Quality office space includes 6 offices, conference room, open work space and large counter with sink
- On-site parking (13 dedicated spaces)
- Conveniently located on EMX line between downtown and the University of Oregon
- \$1.95 per square foot, fully serviced, *less janitorial*

The information in this package was gathered from sources deemed reliable, however Evans Elder Brown & Seubert makes no representation or warranty of the accuracy of the information. Any buyer or tenant considering a purchase or lease of this property should confirm any and all information relied upon in making the decision to purchase or lease prior to finalizing the transaction and bears the risk of all inaccuracies.

# Floor Plan



# Quality Office Space for Lease

488 E 11th Avenue  
Eugene OR 97402

For more property information,  
please contact:

**Stephanie Seubert**  
stephanie@ebcre.com

(541) 345-4860

**Evans  
Elder  
Brown &  
Seubert**

COMMERCIAL REAL ESTATE

