

**Evans
Elder
Brown &
Seubert**

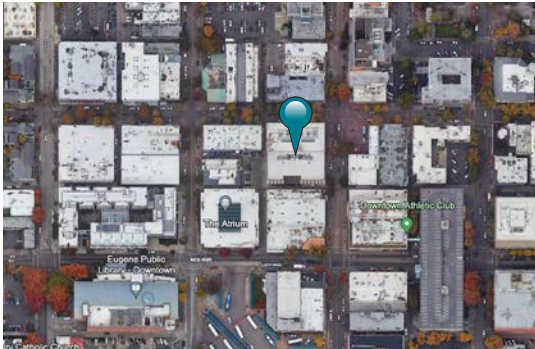
COMMERCIAL REAL ESTATE

101 E. Broadway
Suite 101
Eugene, OR 97401
(541) 345-4860

eebcre.com

FOR LEASE

940 Willamette Street
Eugene, Oregon 97401



CONTACT

Jeff Elder

jeff@eebcre.com

Ashley Hope Elder

ashley@eebcre.com

(541) 345-4860

Licensed in the State of Oregon



The Woolworth Building

Ground Floor Retail Space

- 1,212 square feet
- Storefront on Willamette Street
- Fiber Optic Cable
- Lease includes membership to Downtown Athletic Club
- \$1.50 per square foot, triple net

Overview



Triple Nets

\$0.55 per square foot

- Property Taxes
- Insurance
- Water & Sewer
- HVAC

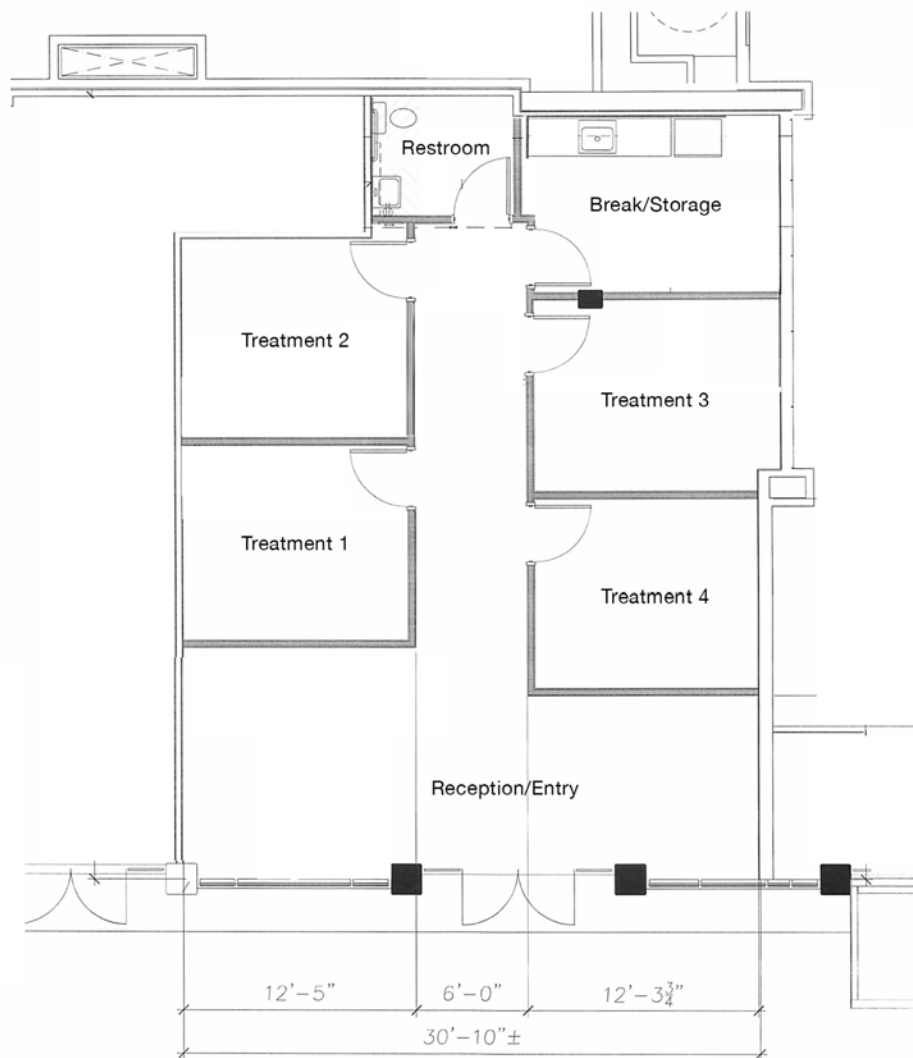
Tenant pays electric

Downtown Athletic Club Membership

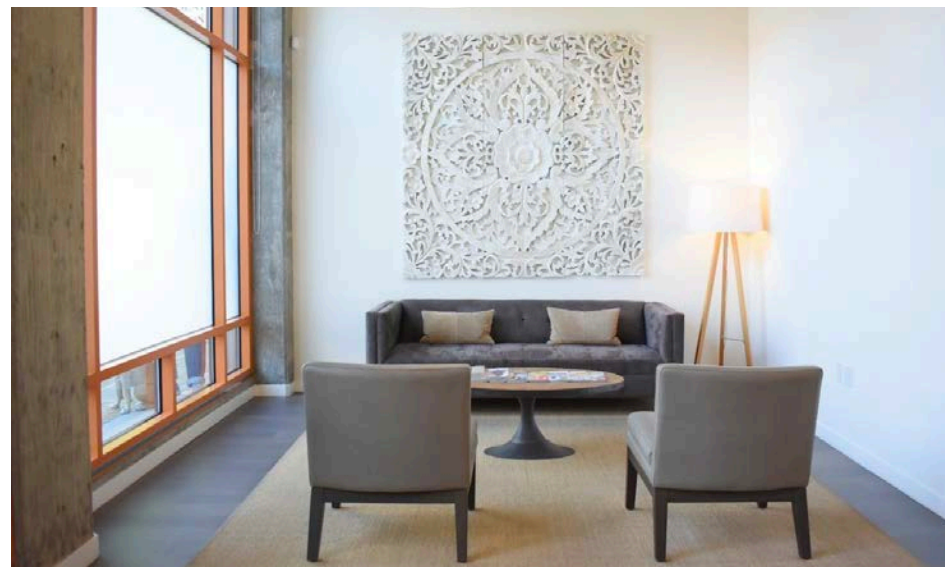
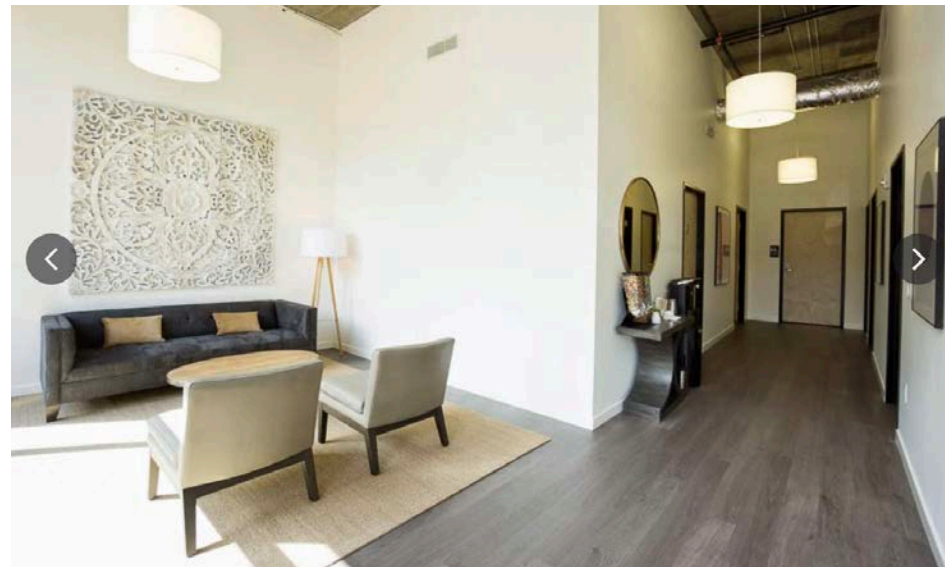
Lease includes membership to the Downtown Athletic Club during the lease term



Retail Floor Plan



Ground Floor Entry on Willamette Street



The Woolworth Building

Location Details

- Conveniently located in the central business district
- Has close proximity to city and county facilities, restaurants, and retail
- Within one block from efficient public transit
- Across the street from the Downtown Athletic Club

