



FOR LEASE

High-Traffic Retail Space

4714 Royal Avenue
Eugene OR 97402

ROYAL WEST SHOPPING CENTER

- 1,200 Square Feet of in-line space
- Shopping center is anchored by Albertsons and Bi-Mart
- Ample on-site parking with great visibility
- Space includes reception, five offices and one ADA restroom
- \$19.00 per sq. ft. per year NNN
- (NNN's are approximately \$9.22/SF/year)

**Evans
Elder
Brown &
Seubert**

COMMERCIAL REAL ESTATE

Lilly Storment
lilly@eebcre.com

Alan Evans
alan@eebcre.com

541.345.4860

Licensed in the State of Oregon.

Photographs

4714 Royal Avenue
Eugene OR 97402

Evans
Elder
Brown &
Seubert

COMMERCIAL REAL ESTATE

CONTACT

Lilly
Storment

lilly@eebcre.com

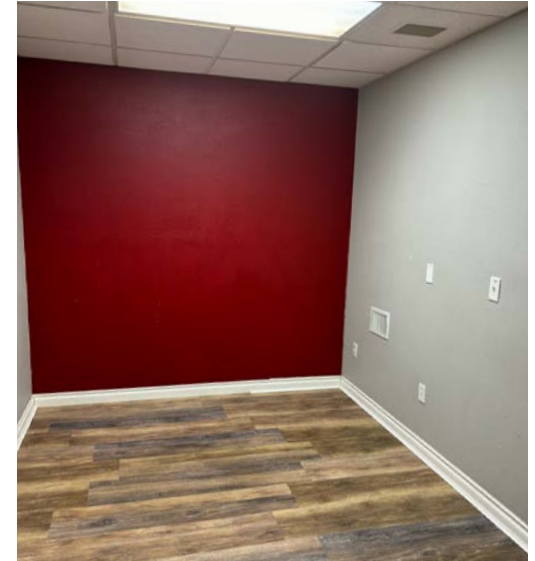
Alan
Evans

alan@eebcre.com

541.345.4860

101 East Broadway
Suite #101
Eugene, OR 97401

Licensed in the
State of Oregon.



Site Map

4714 Royal Avenue
Eugene OR 97402

Evans
Elder
Brown &
Seubert

COMMERCIAL REAL ESTATE

CONTACT

Lilly
Storment

lilly@eebcre.com

Alan
Evans

alan@eebcre.com

541.345.4860

101 East Broadway
Suite #101
Eugene, OR 97401

Licensed in the
State of Oregon.



Location

4714 Royal Avenue
Eugene OR 97402

Evans
Elder
Brown &
Seubert

COMMERCIAL REAL ESTATE

CONTACT

Lilly
Storment

lilly@eebcre.com

Alan
Evans

alan@eebcre.com

541.345.4860

101 East Broadway
Suite #101
Eugene, OR 97401

Licensed in the
State of Oregon.

