

**Evans
Elder
Brown &
Seubert**

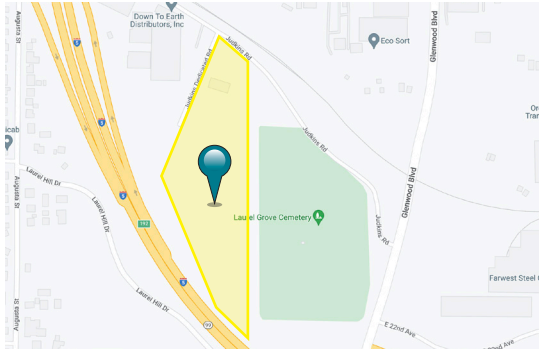
COMMERCIAL REAL ESTATE

101 E. Broadway
Suite 101
Eugene, OR 97401
(541) 345-4860

eebcre.com

FOR SALE

Industrial Property - Judkins Road
Eugene, OR 97403



CONTACT

John Brown
john@eebcre.com

Jeff Elder
jeff@eebcre.com

(541) 345-4860

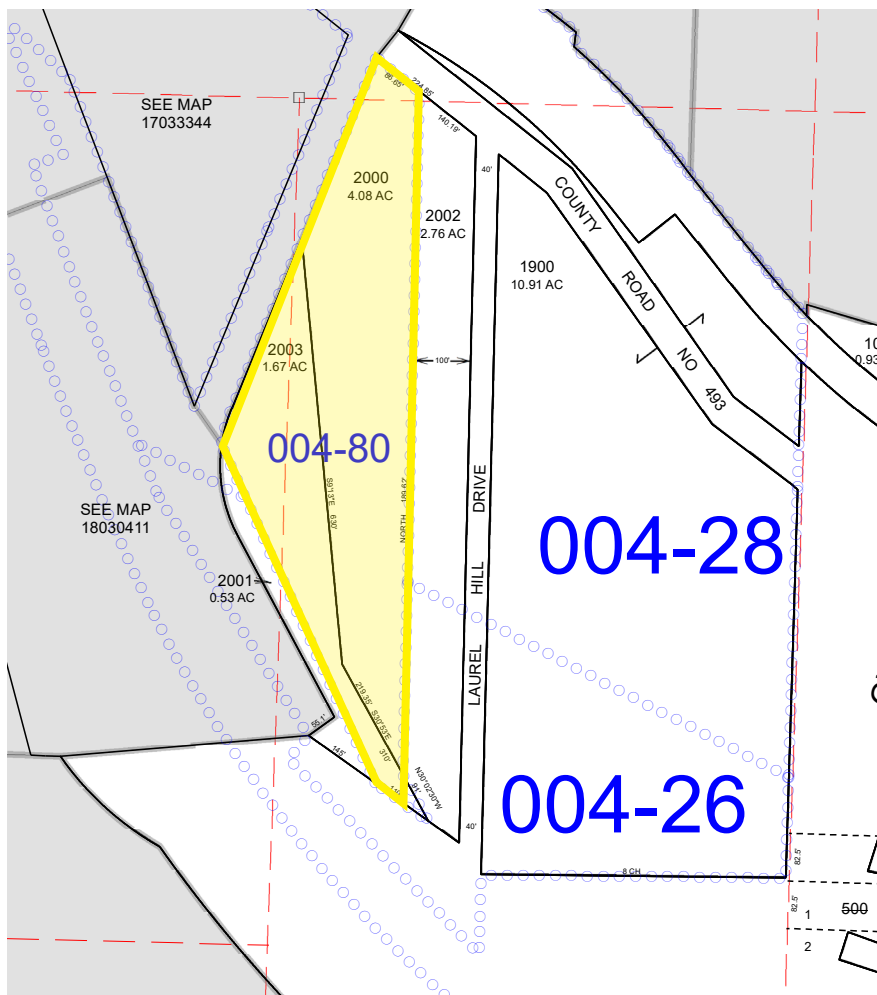
Licensed in the State of Oregon



Judkins Road Industrial Property

- 5.7 acres
- Zoned Light Medium Industrial (LMI)
- Excellent I-5 access
- \$8.00 per square foot

Property Details



Billboard Lease

- Leases a billboard on the property
- Lease terms available

Lane County Assessor Information

- Tax Map and Lot No.: 18-03-03-20-02000
- Tax Map and Lot No.: 18-03-03-20-02003

Access

- Judkins Road Frontage
- Adjacent unimproved County roadway

Aerial

