

**Evans
Elder
Brown &
Seubert**

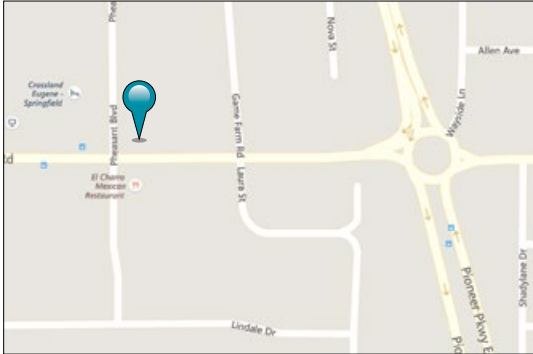
COMMERCIAL REAL ESTATE

101 E. Broadway
Suite 101
Eugene, OR 97401
(541) 345-4860

eebcre.com

FOR LEASE

498 Harlow Road, Suite 4
Eugene, Oregon



CONTACT

Jeff Elder
jeff@eebcre.com

Ashley Hope Elder
ashley@eebcre.com
(541) 345-4860

Licensed in the State of Oregon



Professional Dental Suite

- Approximately 2,150 square feet
- Seven (7) operatory areas / two (2) offices
- Three (3) restrooms
- On-site parking
- \$6,000.00 per month modified gross

The information in this package was gathered from sources deemed reliable, however Evans Elder Brown & Seubert makes no representation or warranty of the accuracy of the information.
Any buyer or tenant considering a purchase or lease of this property should confirm any and all information relied upon in making the decision to purchase or lease prior to finalizing the transaction and bears the risk of all inaccuracies.

Overview

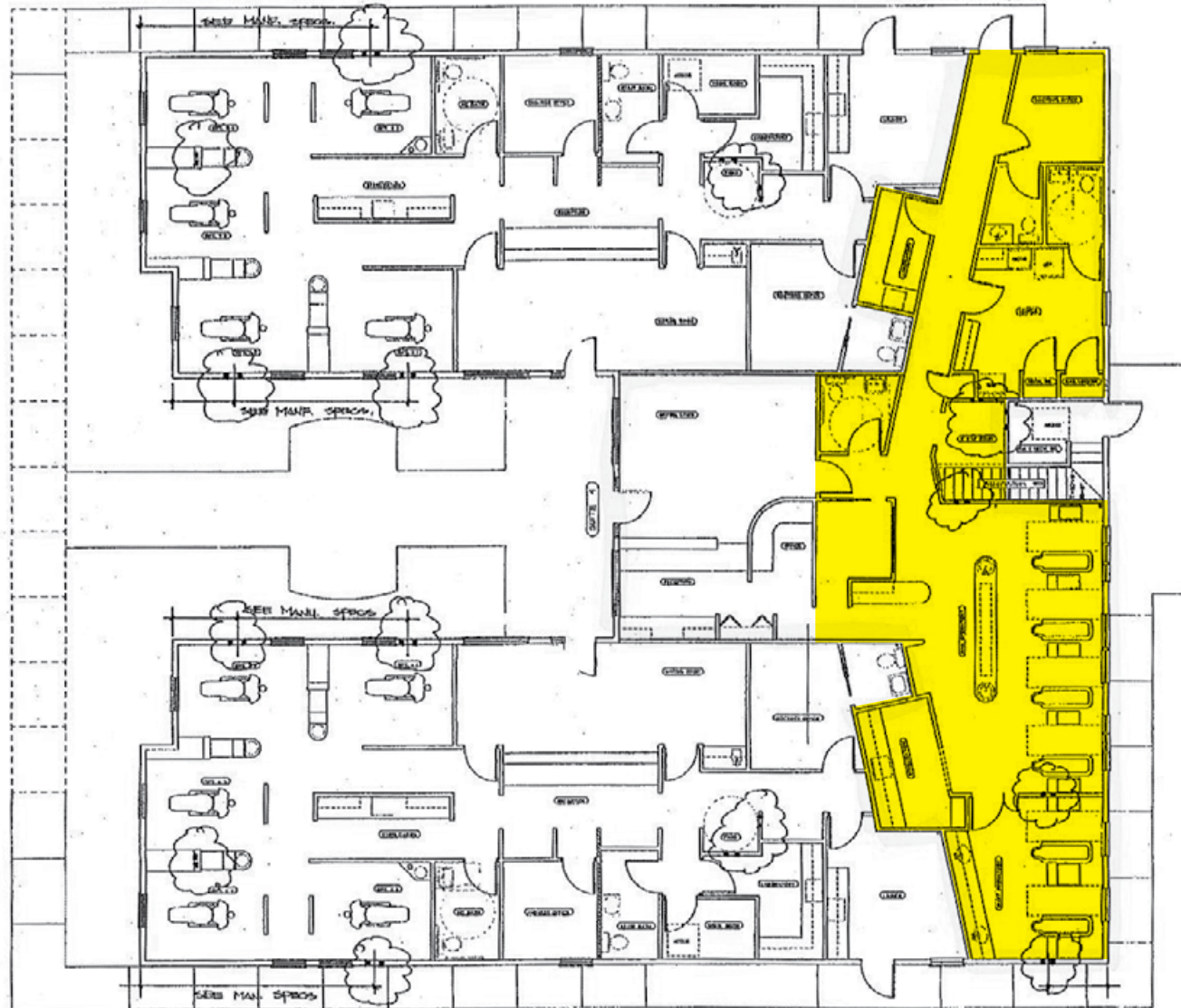


Dental Suite

- Reception area
- 7 operatory areas
- 2 offices
- Lab
- X-ray area
- 3 restrooms
- Staff lounge
- On-site parking



Suite 4 Floor Plan



Location



Location

