



**FOR LEASE**

# Class A Office Space

**Evans  
Elder  
Brown &  
Seubert**

COMMERCIAL REAL ESTATE

## CONTACT

**Stephanie Seubert**

stephanie@eebcre.com

**541.345.4860**

Licensed in the State of Oregon.

## DETAILS

- High quality, Class A office space with beautiful finishes
- On-site parking (surface lot & secure underground lot) available at market rates
- Conveniently located in the heart of Downtown Eugene
- \$1.95 per sq. ft. per month, Fully Serviced, less janitorial

**10th & Mill Building**  
360 East 10th Avenue  
Eugene, Oregon 97401

# Suite 101

10th & Mill Building  
360 East 10th Avenue, Eugene OR 97401

Evans  
Elder  
Brown &  
Seubert

COMMERCIAL REAL ESTATE

## CONTACT

**Stephanie  
Seubert**

stephanie@eebcre.com

**541.345.4860**

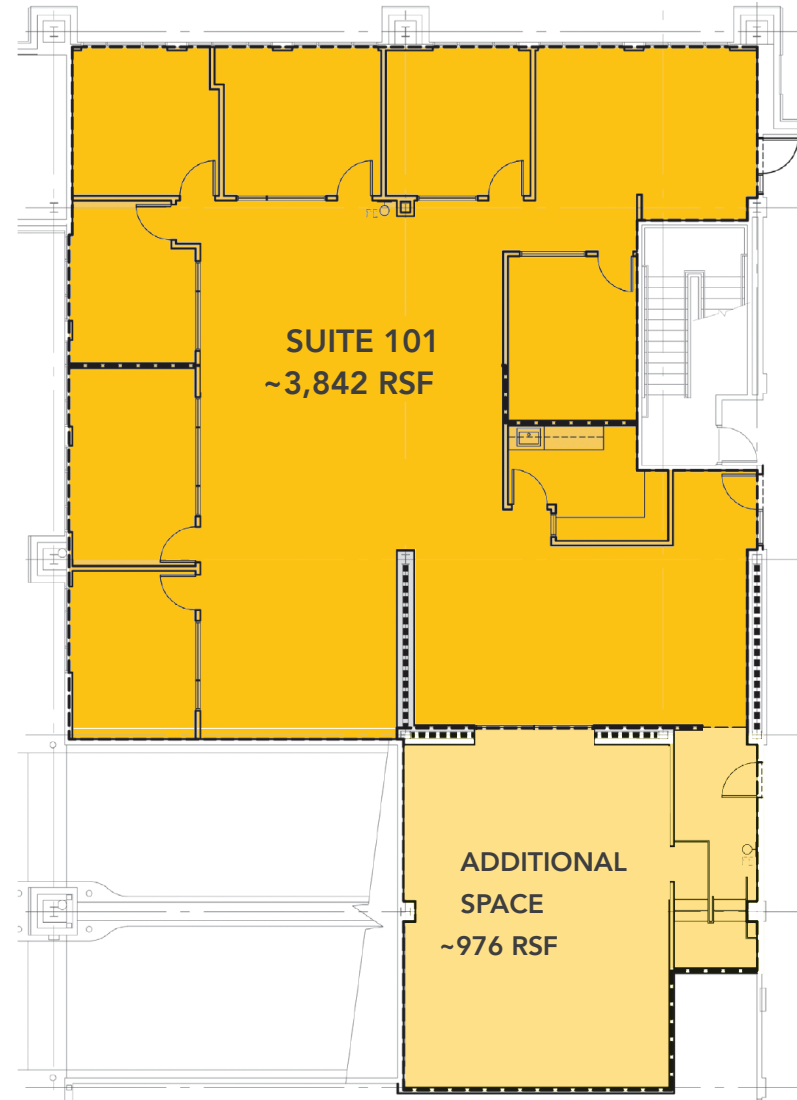
101 East Broadway  
Suite #101  
Eugene, OR 97401

Licensed in the  
State of Oregon.

## Suite 101

**APPROXIMATELY 3,842 RSF**

- An additional 976 rsf can be added for additional storage/ office area
- 7 Private offices with large windows
- Reception Area
- Open Work Area
- Kitchenette Area
- Storage Area
- \$1.95 per RSF per month, Fully Serviced, less janitorial



**10th & Mill Building**  
360 East 10th Avenue, Eugene OR 97401

Evans  
Elder  
Brown &  
Seubert

## COMMERCIAL REAL ESTATE

## CONTACT

**Stephanie  
Seubert**

stephanie@eebcre.com

**541.345.4860**

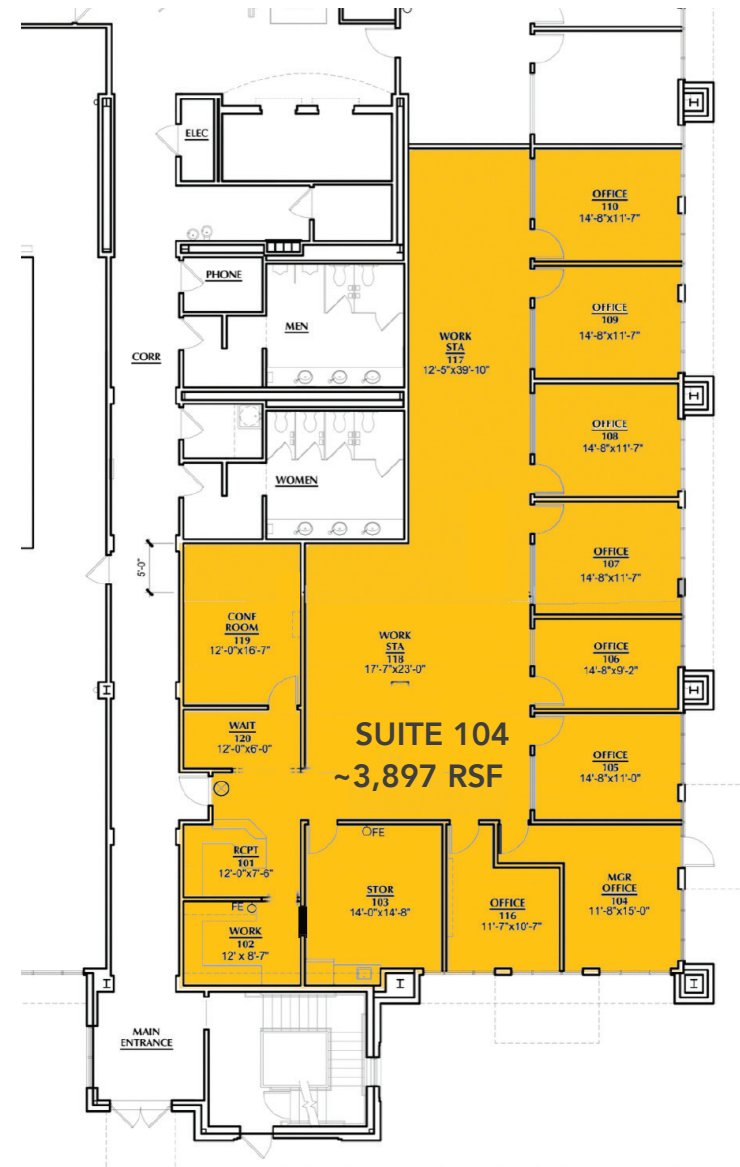
101 East Broadway  
Suite #101  
Eugene, OR 97401

Licensed in the  
State of Oregon.

## Suite 104

**APPROXIMATELY 3,897 RSF**

- 8 Private offices with large windows
- Reception Area
- Open Work Area
- Kitchenette Area
- Conference Room
- \$1.95 per RSF per month,  
Fully Serviced, less janitorial





**10th & Mill Building**  
360 East 10th Avenue, Eugene OR 97401

**Evans  
Elder  
Brown &  
Seubert**

## COMMERCIAL REAL ESTATE

## CONTACT

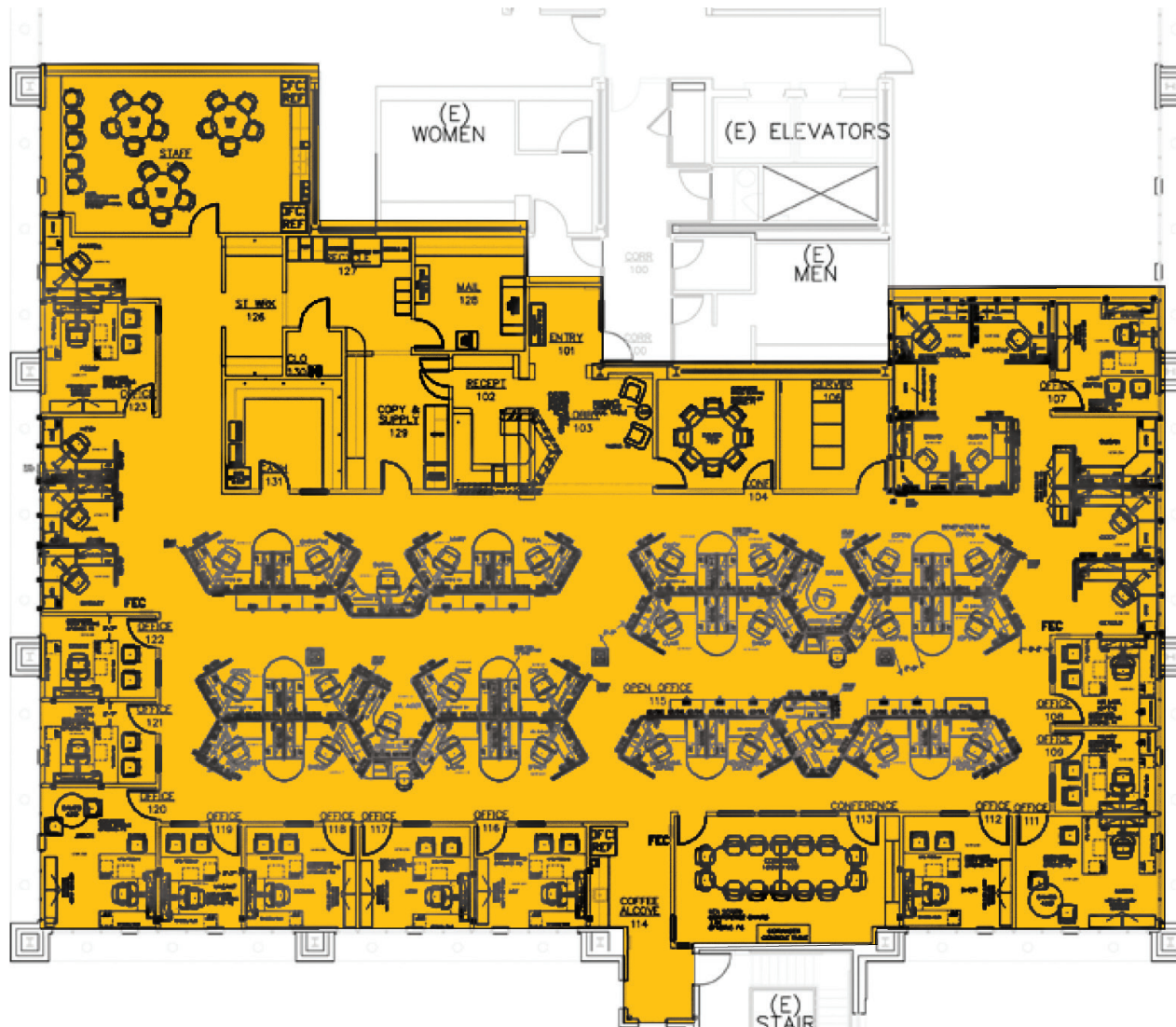
**Stephanie  
Seubert**

stephanie@eebcre.com

**541.345.4860**

101 East Broadway  
Suite #101  
Eugene, OR 97401

Licensed in the  
State of Oregon.



## Suite 202

**APPROXIMATELY  
9,637 RSF**

- Reception/Copy Area
- Mail Room
- Server Room
- Open Work Areas
- Private Perimeter Offices & Conference Rooms
- Large break room
- Many offices have windows which provide abundant natural light
- \$1.95/RSF/Month Fully Serviced, less janitorial

# 3rd Floor | Suite D

10th & Mill Building  
360 East 10th Avenue, Eugene OR 97401

Evans  
Elder  
Brown &  
Seubert

COMMERCIAL REAL ESTATE

## CONTACT

**Stephanie  
Seubert**

stephanie@eebcre.com

**541.345.4860**

101 East Broadway  
Suite #101  
Eugene, OR 97401

Licensed in the  
State of Oregon.



## 3rd Floor | Suite D

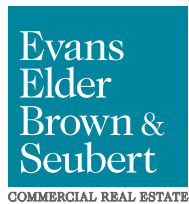
**APPROXIMATELY 2,000 RSF**

- Space to be reconfigured to suit tenant's needs
- Access to common area restrooms
- \$1.95 per RSF per month, Fully Serviced, less janitorial



# Location

10th & Mill Building  
360 East 10th Avenue, Eugene OR 97401



## CONTACT

**Stephanie Seubert**  
stephanie@eebcre.com

**541.345.4860**