

THE MILLRACE

PROFESSIONAL BUILDING

1776 MILLRACE DRIVE FOR LEASE

EUGENE, OREGON 97403



Evans
Elder
Brown &
Seubert

COMMERCIAL REAL ESTATE

CONTENTS

- 3 ... Property Overview
- 4 ... Interior Photos
- 5 ... Floor Plan - 1st
- 6 ... Floor Plan - 2nd
- 7 ... Floor Plan - 3rd
- 8 ... Aerial Map

CONTACTS

Jeff Elder
jeff@eebcre.com
Ashley Hope Elder
ashley@eebcre.com

(541) 345 - 4860

Evans, Elder, Brown & Seubert
101 E Broadway Street, Suite 101
Eugene, OR 97401





Property Overview

The Millrace Professional Building is an 80,000+ square foot Class A office building located minutes away from Eugene's University District. This beautiful and modern property is in a highly desirable location within minutes of both the prestigious University of Oregon and Downtown Eugene.

Features and Amenities

- Easy access to the University of Oregon, I-5, and Downtown Eugene
- 170 seat conference room on second floor
- Multiple kitchens, conference rooms, private offices, and 4th floor lounge
- Gym space with public lockers on the ground floor
- Served with two elevators
- 200 total parking spaces; ratio 2.5/1000

Available Space

- 4,127 - 20,275 square feet

Rent

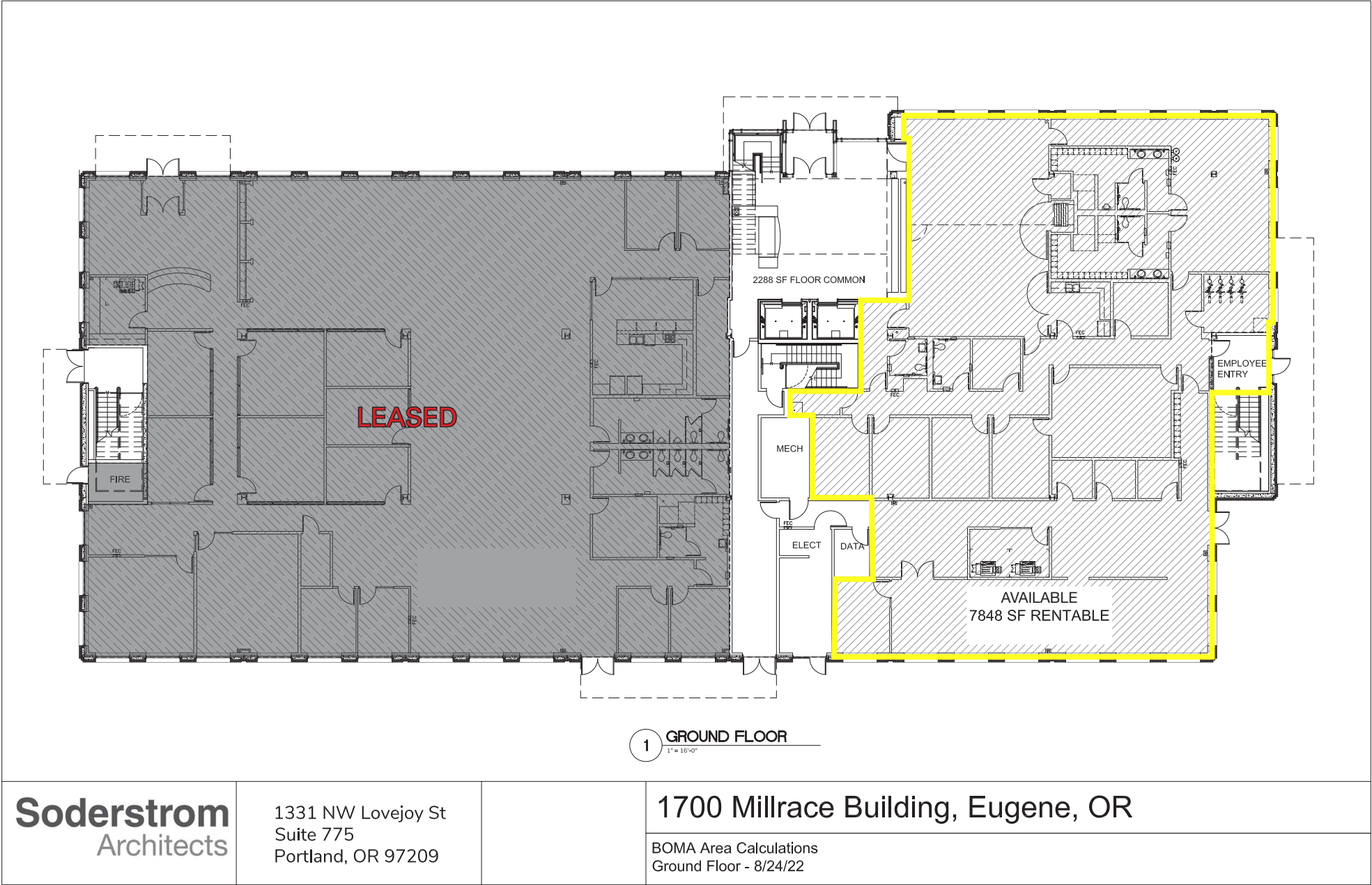
- \$21.00 per square foot Base Rent
- \$7.53 per square foot approx. Triple Nets
 - ❖ Common area maintenance
 - ❖ Real property taxes
 - ❖ Utilities
 - ❖ Janitorial

Interior Photos



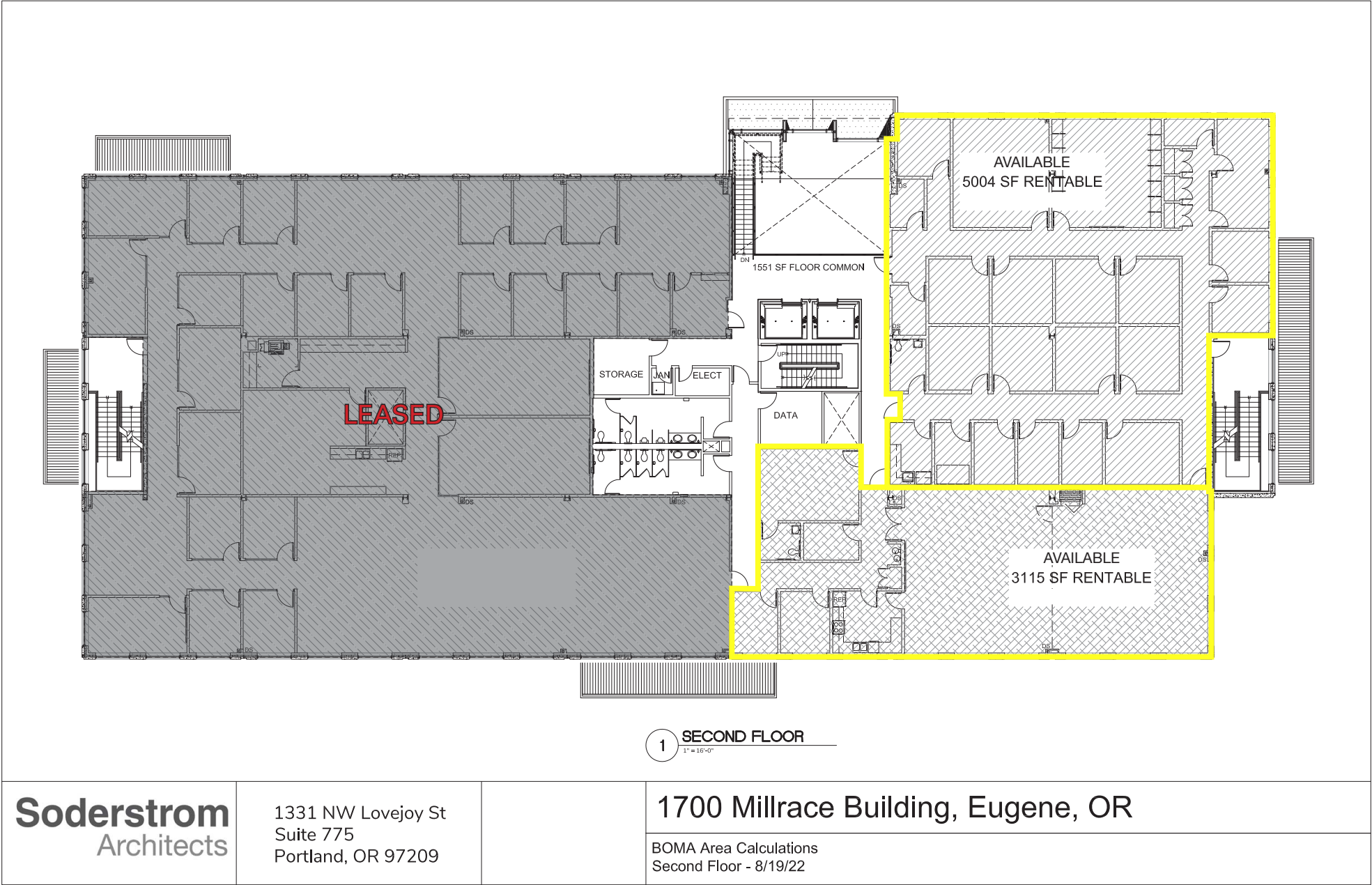
The information in this package was gathered from sources deemed reliable, however Evans Elder Brown & Seubert makes no representation or warranty of the accuracy of the information. Any buyer or tenant considering a purchase or lease of this property should confirm any and all information relied upon in making the decision to purchase or lease prior to finalizing the transaction and bears the risk of all inaccuracies.

Floor Plan - First Floor



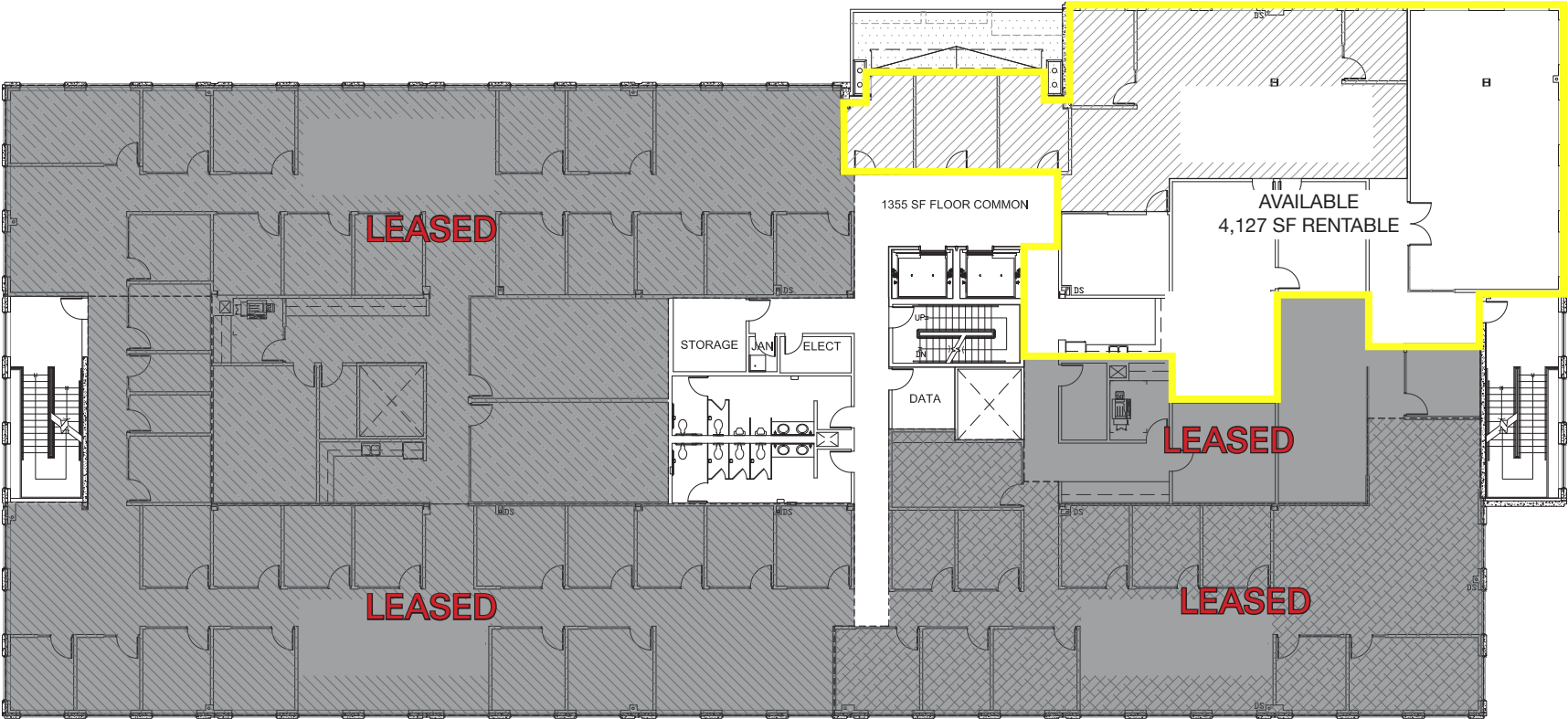
The information in this package was gathered from sources deemed reliable, however Evans Elder Brown & Seubert makes no representation or warranty of the accuracy of the information. Any buyer or tenant considering a purchase or lease of this property should confirm any and all information relied upon in making the decision to purchase or lease prior to finalizing the transaction and bears the risk of all inaccuracies.

Floor Plan - Second Floor



The information in this package was gathered from sources deemed reliable, however Evans Elder Brown & Seubert makes no representation or warranty of the accuracy of the information. Any buyer or tenant considering a purchase or lease of this property should confirm any and all information relied upon in making the decision to purchase or lease prior to finalizing the transaction and bears the risk of all inaccuracies.

Floor Plan - Third Floor



1 THIRD FLOOR
1" = 10'-0"

| | | |
|---------------------------------|---|---|
| Soderstrom Architects | 1331 NW Lovejoy St Suite 775 Portland, OR 97209 | 1700 Millrace Building, Eugene, OR BOMA Area Calculations - Option for 5th Tenant Third Floor 8/29/22 |
|---------------------------------|---|---|

The information in this package was gathered from sources deemed reliable, however Evans Elder Brown & Seubert makes no representation or warranty of the accuracy of the information. Any buyer or tenant considering a purchase or lease of this property should confirm any and all information relied upon in making the decision to purchase or lease prior to finalizing the transaction and bears the risk of all inaccuracies.

Aerial Map

