

**Evans
Elder
Brown &
Seubert**

COMMERCIAL REAL ESTATE

101 E. Broadway
Suite 101
Eugene, OR 97401
(541) 345-4860

eebcre.com

FOR LEASE

975 Oak Street
Eugene, Oregon 97401



CONTACT

Stephanie Seubert
stephanie@eebcre.com

Lilly Storment
lilly@eebcre.com

(541) 345-4860

Licensed in the State of Oregon



Downtown Landmark Office Space Available

The Citizen's Building

- Centrally located Class A office building near the heart of Downtown Eugene
- Building lobby attendants and on-site building manager provide a high level of customer service to clients and customers
- High speed fiber available (EUGNet, Comcast & Century Link)
- \$1.50 per rentable square foot, per month, triple net

The information in this package was gathered from sources deemed reliable, however Evans Elder Brown & Seubert makes no representation or warranty of the accuracy of the information. Any buyer or tenant considering a purchase or lease of this property should confirm any and all information relied upon in making the decision to purchase or lease prior to finalizing the transaction and bears the risk of all inaccuracies.

4th Floor Plan

SUITE 450

- Approximately 6,094 rsf
- Formal lobby and reception
- 17 private offices
- Open work area
- Conference room
- Large kitchen and break room
- Shared use of common area restrooms
- \$1.50 per square foot, per month, triple net



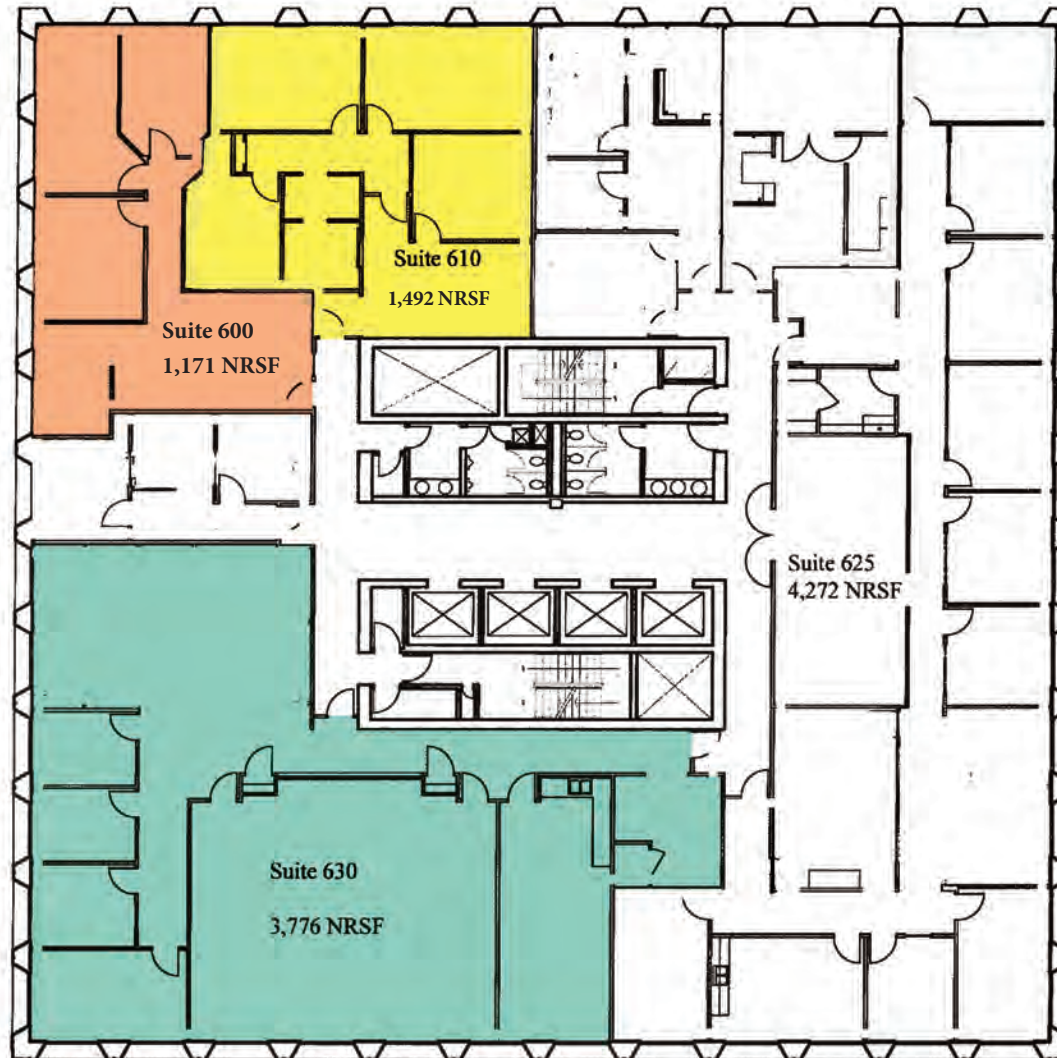
6th Floor Plan

SUITE 600

- Approximately 1,171 rsf
- Reception and lobby
- 3 large private offices
- Open work area/storage
- Shared use of common area restrooms
- \$1.50 per square foot, per month, triple net

SUITE 630

- Approximately 3,776 rsf
- 4 private offices, each with large windows which provide abundant natural light
- Large open work areas that could be converted to offices
- Large lunch room
- Shared use of common area restrooms
- \$1.50 per square foot, per month, triple net



SUITE 610

- Approximately 1,492 rsf
- Reception area with work space
- 4 private offices
- Shared use of common area restrooms and lounge
- \$1.50 per square foot, per month, triple net