

**Evans  
Elder  
Brown &  
Seubert**

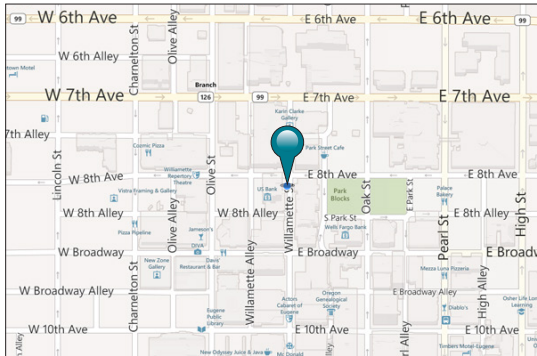
COMMERCIAL REAL ESTATE

101 E. Broadway  
Suite 101  
Eugene, OR 97401  
(541) 345-4860

*eebcre.com*

## FOR LEASE

US Bank Center  
800 Willamette Street



### CONTACT

**Stephanie Seubert**  
[stephanie@eebcre.com](mailto:stephanie@eebcre.com)

(541) 345-4860

Licensed in the State of Oregon



## Downtown Class “A” Office Space

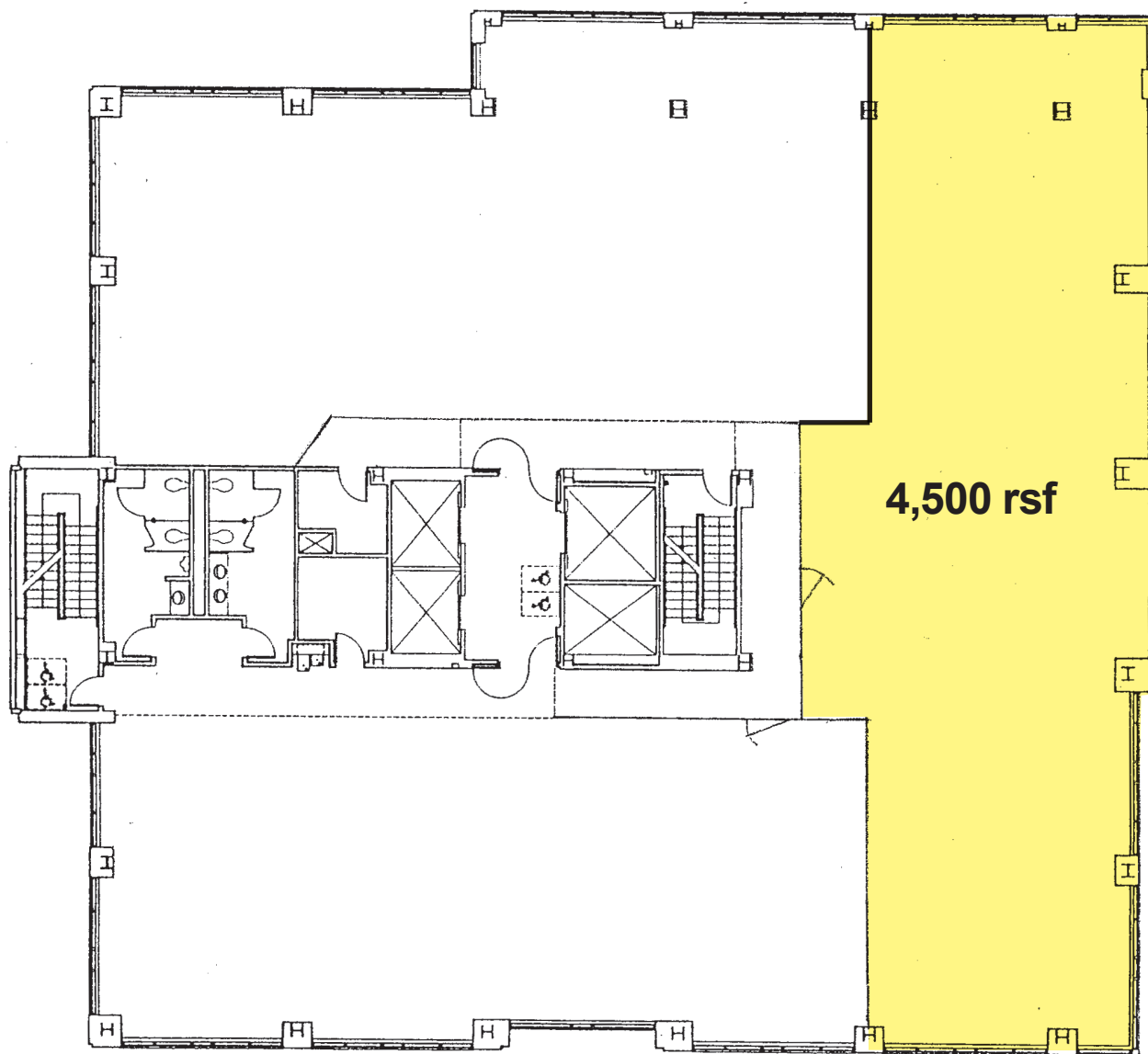
- High quality office space with stunning views
- Conveniently located in the heart of Downtown Eugene
- High speed fiber connectivity
- \$1.95 per square foot, per month, Fully Serviced

The information in this package was gathered from sources deemed reliable, however Evans Elder Brown & Seubert makes no representation or warranty of the accuracy of the information. Any buyer or tenant considering a purchase or lease of this property should confirm any and all information relied upon in making the decision to purchase or lease prior to finalizing the transaction and bears the risk of all inaccuracies.

## 4th Floor Space

### 4TH FLOOR

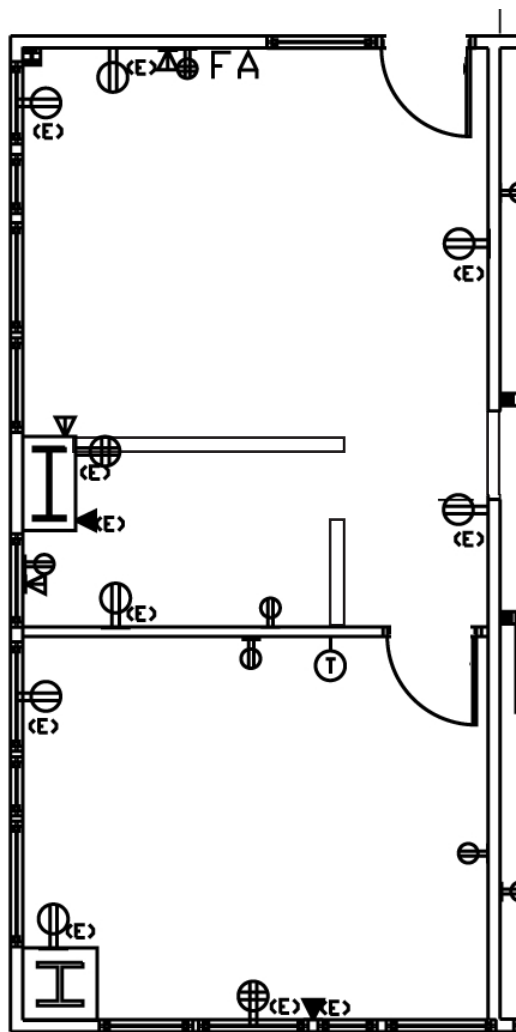
- Approximately 4,500 rsf of shell space
- Can divide
- Excellent views to the South and West
- Tenant Improvement Allowance negotiable
- Space can be designed specific to Tenant's needs



# Suite 535

## SUITE 535

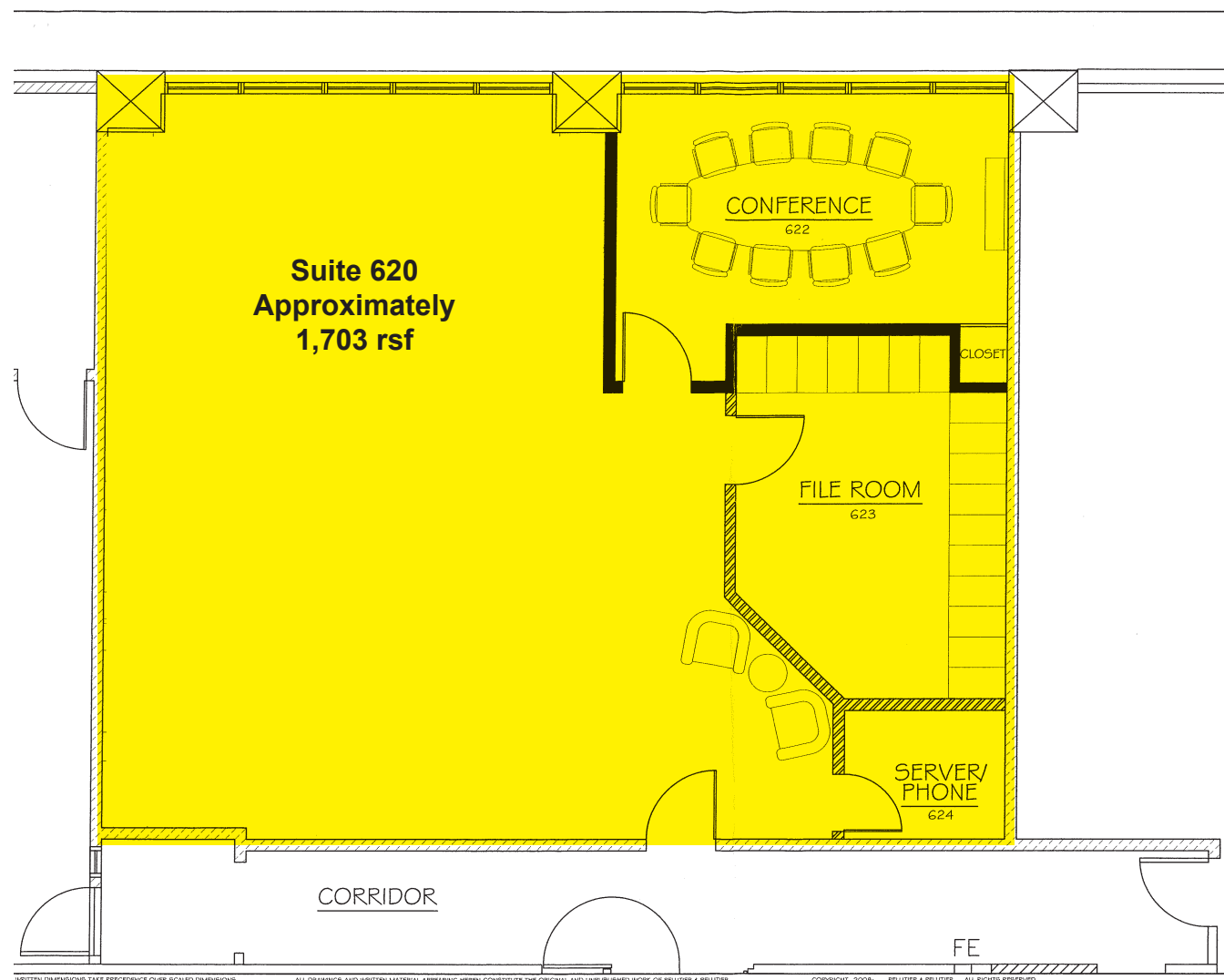
- Approximately 600 rentable square feet
- Reception, small work area and large private corner office
- Windows provide abundant natural light and stunning views to South and East



# Suite 620

## SUITE 620

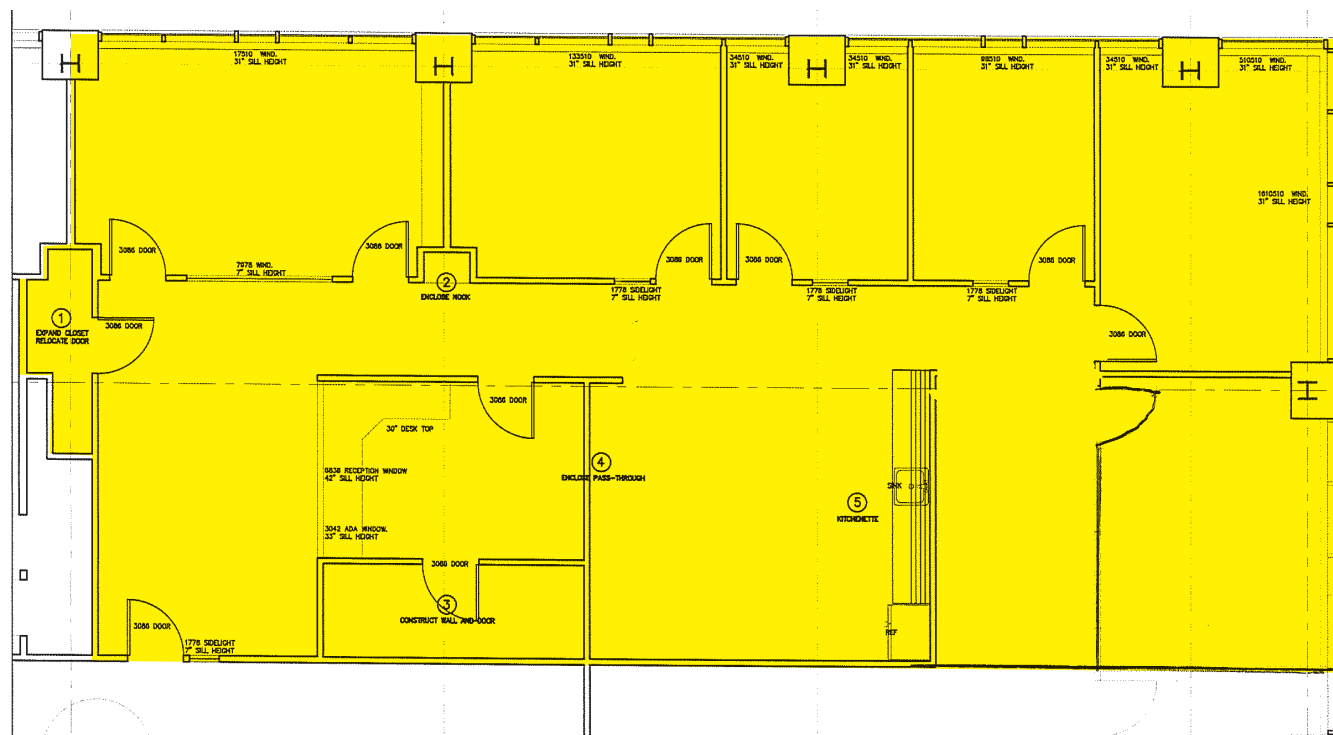
- Approximately 1,703 rentable square feet
- Open work area with large private conference room or office, storage area or 2nd office and server room
- Windows provide abundant natural light and stunning views to the West



# Suite 770

## SUITE 770

- Approximately 2,592 rentable square feet
- Beautiful space with 5 private offices and large conference room with glass wall, reception area and kitchenette area
- West facing windows provide abundant natural light and stunning views





# Aerial Photo

